



HS Flamingo®



WOOD HEATING RE-INVENTED

WELCOME TO OUR SHOP CATALOGUE 2022-23

TFM Fireplaces is an Australian family-owned and operated business, based in Sydney.

We import a wide range of innovative home heating solutions from countries such as Germany, Czech Republic, Poland and Hungary - from companies that are word-leaders in efficient and sustainable fireplace design.

We cater to everyone – whether you seek a traditional style, with modern technology, or are looking for a 21st century design - we have something to perfectly compliment your home.

MOBILE SHOWROOM

At your request, we can place our mobile Showroom at your retail outlet to assist with sales or can be used to deliver the products ordered, whilst performing as a moving billboard.



CATALOGUE 2022-23 INDEX

KRATKI

MB 120 Guillotine	5
Nadia 14 Guillotine	6
Nadia 13 Guillotine	7
Mila 16 G Tunnel Guillotine	8
NBU 500/700	9
NBC 800/400	10
HEB NBC7	11
Lucy 16	12
JAS	13
Aquario16 PW/W	14
Kaseta Arke 70	15
Kaseta Arke 80	16
Kaseta Arke 95	17
Amelia	18
Oliwia LP	19
Koza AB/S/2	20
Turbodym 200 Hot Water Jacket	21
Heat Storage Rings	22

HS FLAMINGO

Piccollo Masterflamme	24
Medie Masterflamme	25
Grande Masterflamme	26
Aquaflame 25	27
Aquaflame Vario Sapporo	28
Deluxe Malia	29
Deluxe Senai	30
Deluxe Pentai	30
Deluxe Kampa	31

KVS MORAVIA

Moravia 9112 Free Standing Cooker	33
Moravia 9112 Free Standing Cooker with **Heat Exchange Unit	34
Moravia 9114 Solid Fuel Stove	35
Moravia 9114 Solid Fuel Stove with **Heat Exchange Unit	36

WAMSLER

Kamino Trendy	38
Bully	39
F Box	40

LS KAMNA

Falco Eco	42
Nemo	43

CEBUD

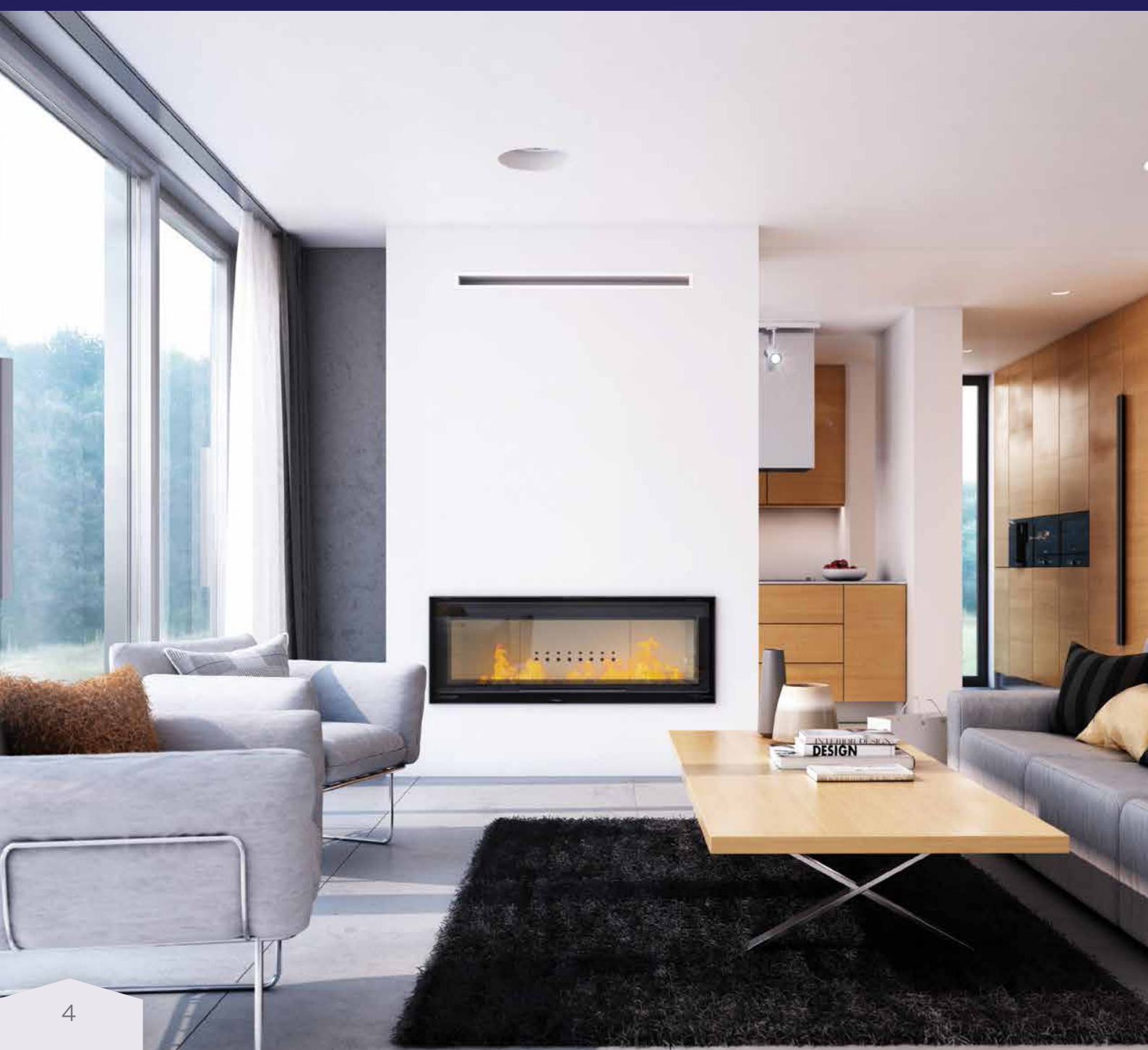
Set 1 Prefabricated Ceramic Heat Storage	45
Set 2 Prefabricated Ceramic Heat Storage	46
Set 3 Prefabricated Ceramic Heat Storage	47
Set 4 + Stand Prefabricated Ceramic Heat Storage	48
550 Prefabricated Site Built Masonry Fireplace	49
550 Corner Prefabricated Site Built Masonry Fireplace	50
550 Tunnel Prefabricated Site Built Masonry Fireplace	51
600 Prefabricated Site Built Masonry Fireplace	52

GRENAISOL

Insulation Boards	54
-------------------------	----

DARCO

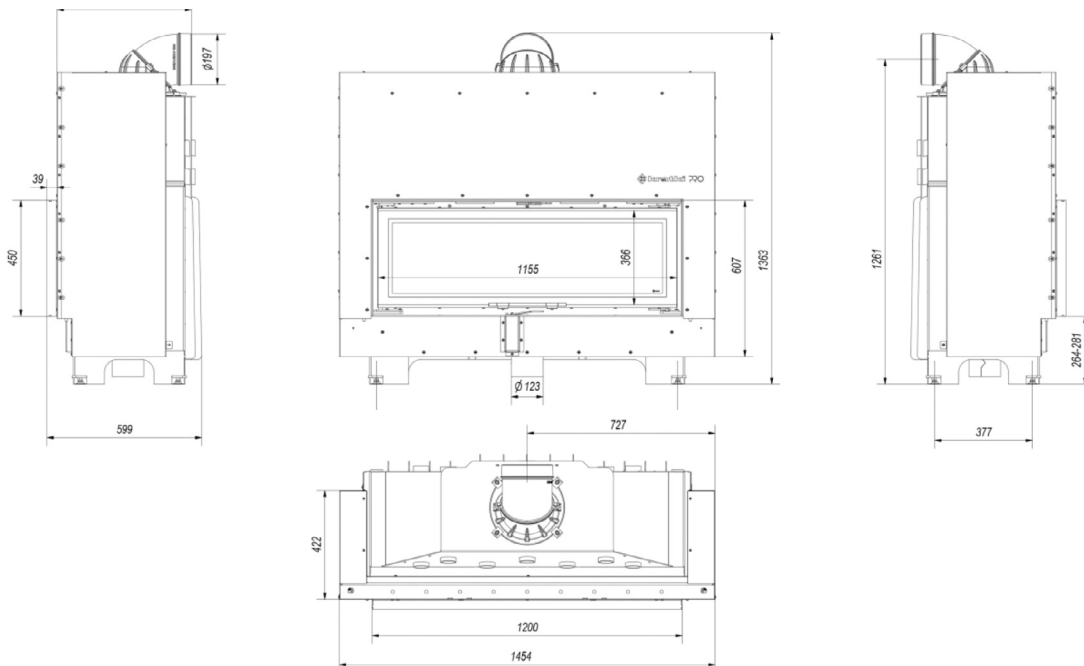
Heat Distribution System	55
--------------------------------	----



MB120

Guillotine

The MB 120 G is part of the built-in fireplace range. The wide glass door gives a panoramic view of the fire. This luxurious fireplace has a modern design with refined attention to detail. A solid, well-built unit, weighing almost 400kg, it allows for a very impressive heat output. The door can be opened in either a guillotine or side swing fashion for convenience. Child lockable for extra safety.



Technical

Rated output: 20 kW
Heating Power Range: 10-27kW
Heating Efficiency: 80 %
Weight of Fireplace: \approx 396 kg
Exhaust Flue Diameter: 200 mm
Max Log length: 50 cm
CO emissions (at 13% O ₂) \leq given in %: 0.1
Energy Efficiency Index (EEL): 105.4
Average flue gas temperature: 240°C
Dimensions (HxWxD): 136.3 x 145.4 x 59.9 cm

Configurations

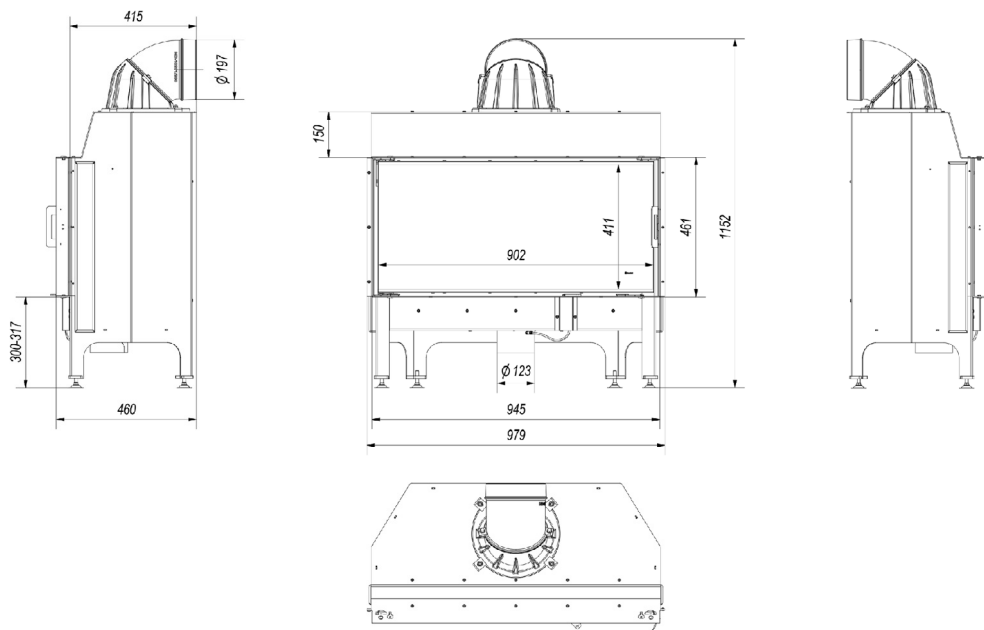
Front Facing Glass



Nadia 14

Guillotine

Modern solution for all who care about the ease of use of the fireplace. Hexagonal chamber and excellent combustion parameters are the most important advantages of this model. The door can be opened in either a guillotine or side swing fashion for convenience. Child lockable for extra safety.



Technical

Rated output: 14 kW
Heating Power Range: 6.5-17kW
Heating Efficiency: 80 %
Weight of Fireplace: ≈ 173 kg
Exhaust Flue Diameter: 200 mm
Max Log length: 850 mm
CO emissions (at 13% O ₂) ≤ given in %: 0
Energy Efficiency Index (EEI): 105.4
Average flue gas temperature: 245°C
Dimensions (HxWxD): 115.2 x 97.9 x 46 cm

Configurations

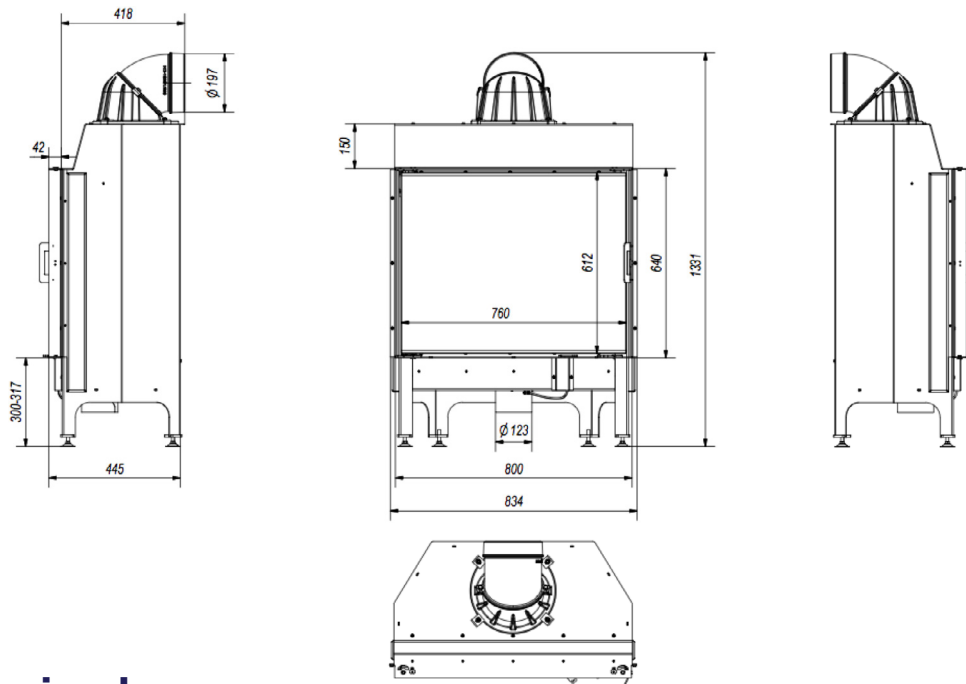
- Front Facing Glass
- Left Biased Glass Corner
- Right Biased Glass Corner



Nadia 13

Guillotine

Modern solution for all who care about the ease of use of the fireplace. Hexagonal chamber and excellent combustion parameters are the most important advantages of this model. Fireplace with double glass version which improves more efficient heating radiation to the rooms as well as ensures less fireplace glazing contamination. The door can be opened in either a guillotine or side swing fashion for convenience. Child lockable for extra safety.



Technical

- Rated output: 13 kW
- Heating Power Range: 6.5-16.5kW
- Heating Efficiency: 81 %
- Weight of Fireplace: ≈ 178 kg
- Exhaust Flue Diameter: 200 mm
- Max Log length: 700 mm
- CO emissions (at 13% O₂) ≤ given in %: 0
- Energy Efficiency Index (EEI): 106.71
- Average flue gas temperature: 240°C
- Dimensions (HxWxD): 133.1 x 83.4 x 44.5 cm

Configurations

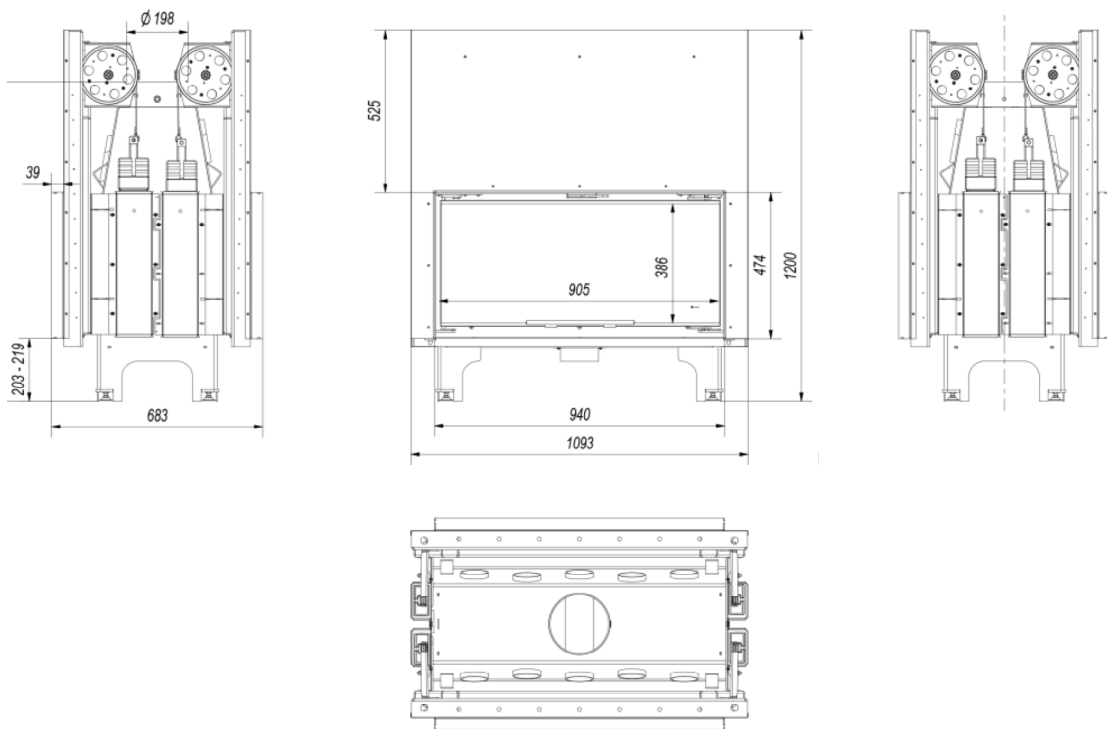
Front Facing Glass



Mila 16 G Tunnel

Guillotine

This tunnel fireplace insert with a modern, panoramic front and big vision of fire. Either door can be opened in either a guillotine or side swing fashion allowing utmost versatility of use.



Technical

Rated output: 16 kW
Heating Power Range: 8-22kW
Heating Efficiency: 71 %
Weight of Fireplace: ≈ 370 kg
Exhaust Flue Diameter: 200 mm
Max Log length: 850 mm
CO emissions (at 13% O ₂) ≤ given in %: 0.15
Energy Efficiency Index (EEI): 98.9
Average flue gas temperature: 265°C
Dimensions (HxWxD): 120 x 109.3 x 68.3 cm

Configurations

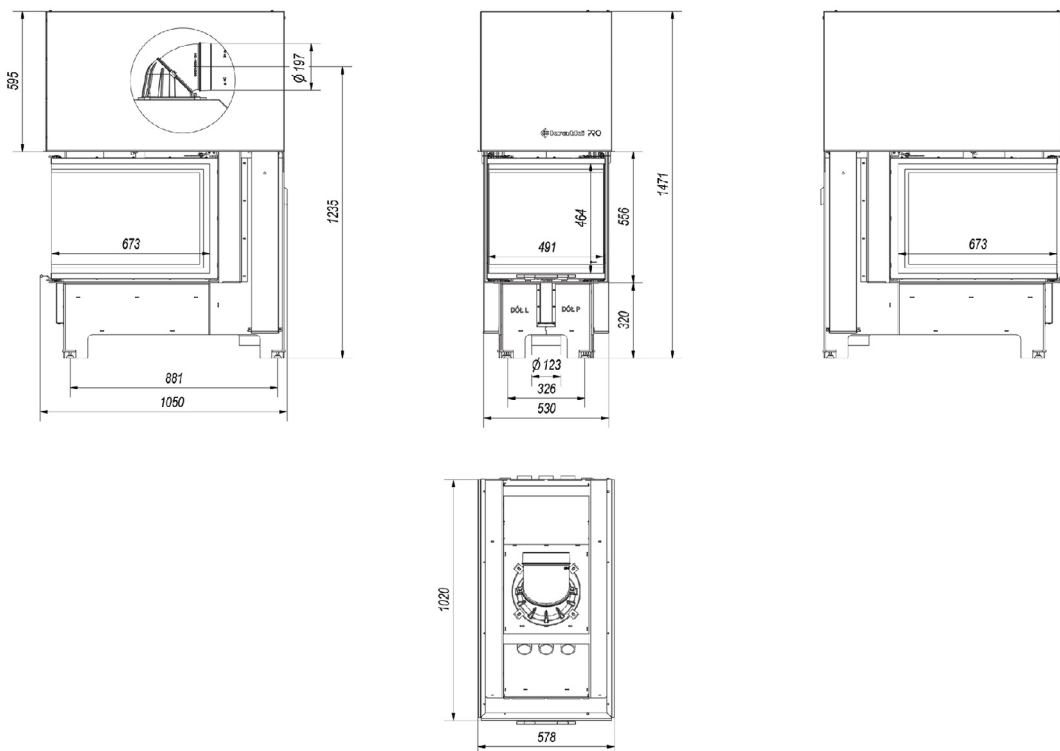
Tunnel - Front and Back Facing Glass



NBU

500/700

Three-sided glazed NBU insert has unique aesthetic and exceptional functionality. Apart from visual effects, the insert guarantees efficient heating and ecological wood combustion.



Technical

- Rated output: 11 kW
- Heating Power Range: 4.5-14kW
- Heating Efficiency: 83 %
- Weight of Fireplace: ≈ 299 kg
- Exhaust Flue Diameter: 200 mm
- Max Log length: 650mm
- CO emissions (at 13% O₂) ≤ given in %: 0
- Energy Efficiency Index (EEL): 111.4
- Average flue gas temperature: 180°C
- Dimensions (HxWxD): 147.1 x 105 x 57.8 cm

Configurations

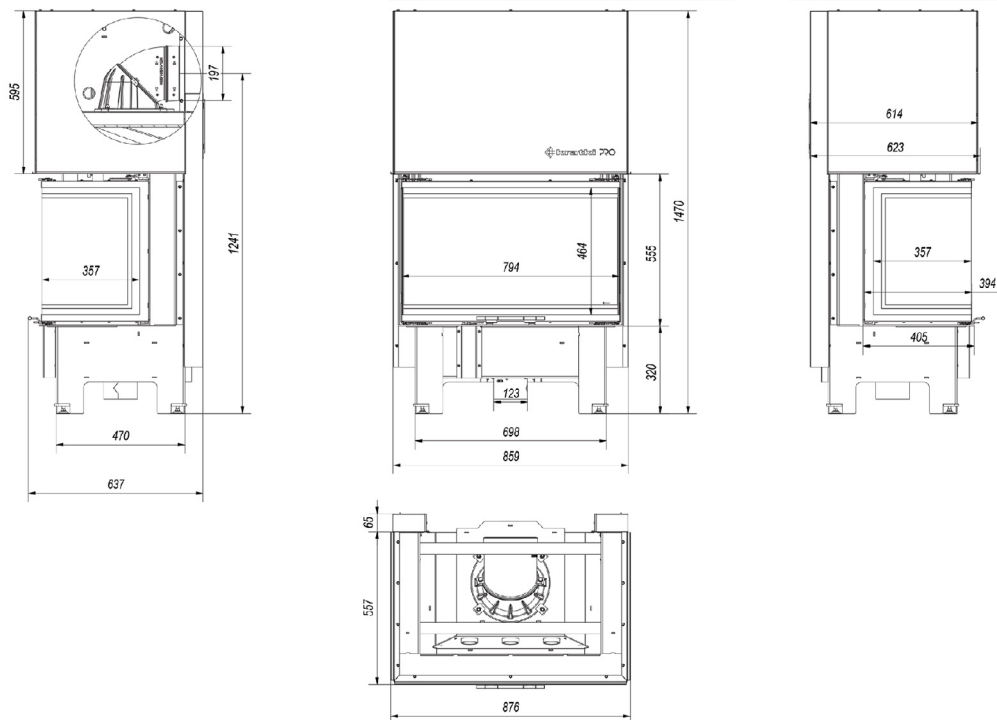
Three Sided Glass



NBC

800/400

Three-side glazing, great technical parameters and precision of execution, these kind of features characterize this line of fireplaces. This fireplaces ultra modern design compliments most living room presentations.



Technical

- Rated output: 10kW
- Heating Power Range: 5-13kW
- Heating Efficiency: 83 %
- Weight of Fireplace: ≈ 275 kg
- Exhaust Flue Diameter: 200 mm
- Max Log length: 700 mm
- CO emissions (at 13% O₂) ≤ given in %: 0
- Energy Efficiency Index (EEI): 111.4
- Average flue gas temperature: 191°C
- Dimensions (HxWxD): 147 x 87.6 x 63.7 cm

Configurations

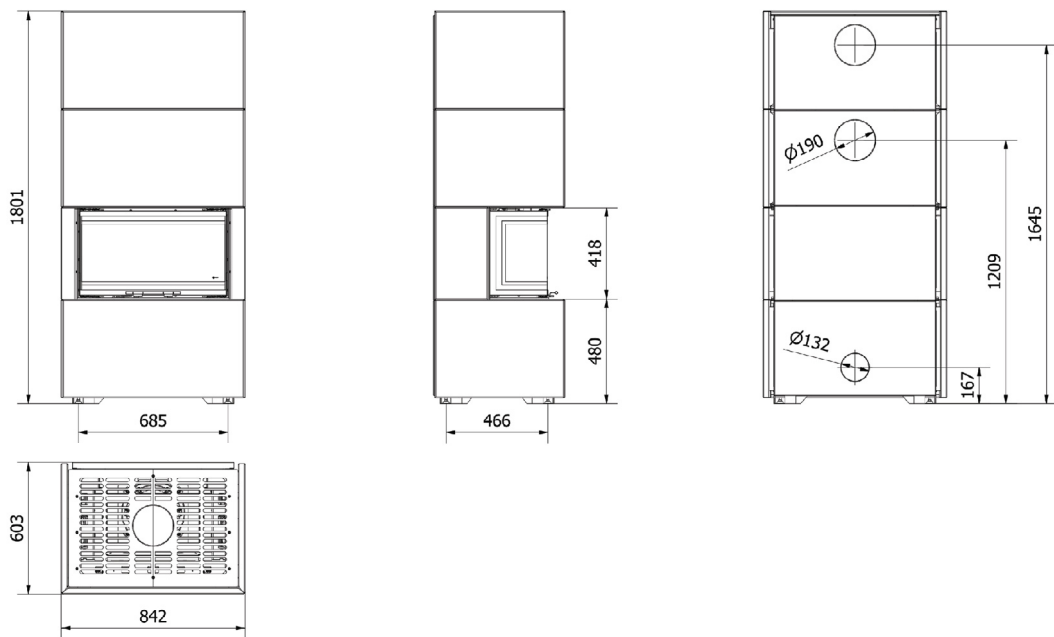
Three Sided Glass



HEB

NBC7

The HOME EASY BOX fireplace is a combination of a modern and ecological NBC 7 insert and a ready-made on trend black or white steel construction. The whole is a perfect response to the current trends in interior design. Perfect proportions and minimalism combined with a three-sided vision of fire will create a cozy atmosphere that favors carefree family meetings.



Technical

Rated output: 7 kW
Heating Power Range: 3-9kW
Heating Efficiency: 83 %
Weight of Fireplace: \approx 328 kg
Exhaust Flue Diameter: 160 mm
Max Log length: 600 mm
CO emissions (at 13% O ₂) \leq given in %: 0.1
Energy Efficiency Index (EEL): 105.4
Average flue gas temperature: 199°C
Dimensions (HxWxD): 81 x 76.3 x 52.7 cm

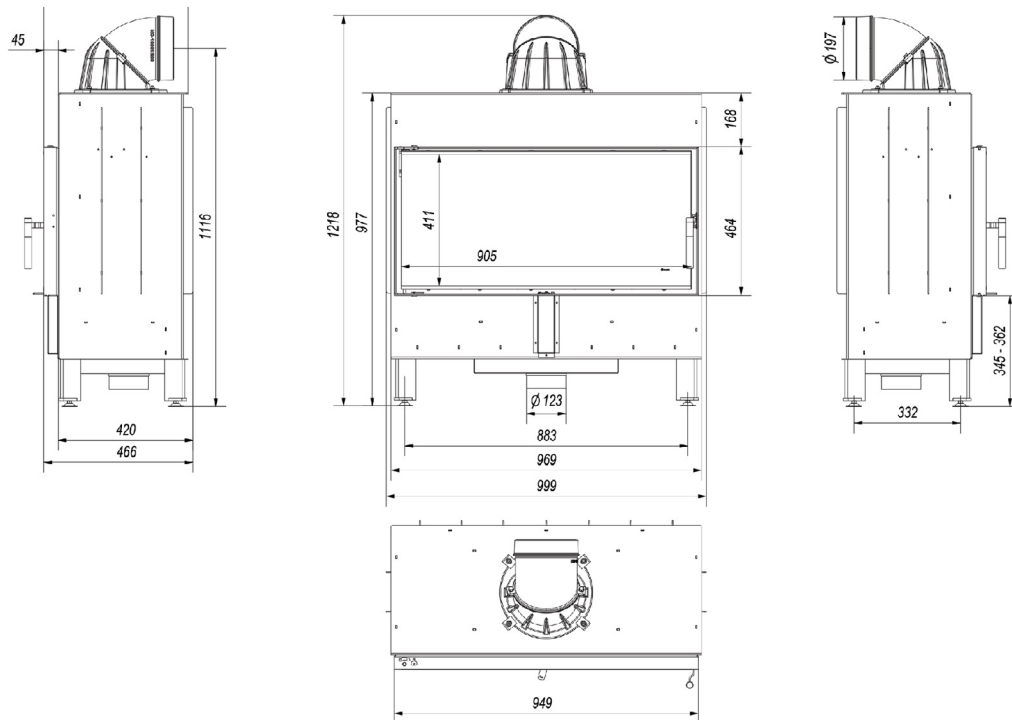
Configurations

Available Colours: White or Black



Lucy 16

For those who care about the maximum use of the heat from the insert. Advanced solutions ensure energy savings and make operation and cleaning of the device very easy. This fireplace improves more efficient heating radiation to the rooms as well as ensures less fireplace glazing contamination.



Technical

- Rated output: 16 kW
- Heating Power Range: 7-20kW
- Heating Efficiency: 81 %
- Weight of Fireplace: ≈ 213 kg
- Exhaust Flue Diameter: 200 mm
- Max Log length: 850 mm
- CO emissions (at 13% O₂) ≤ given in %: 0
- Energy Efficiency Index (EEI): 106.71
- Average flue gas temperature: 260°C
- Dimensions (HxWxD): 121.8 x 99.9 x 46.6 cm

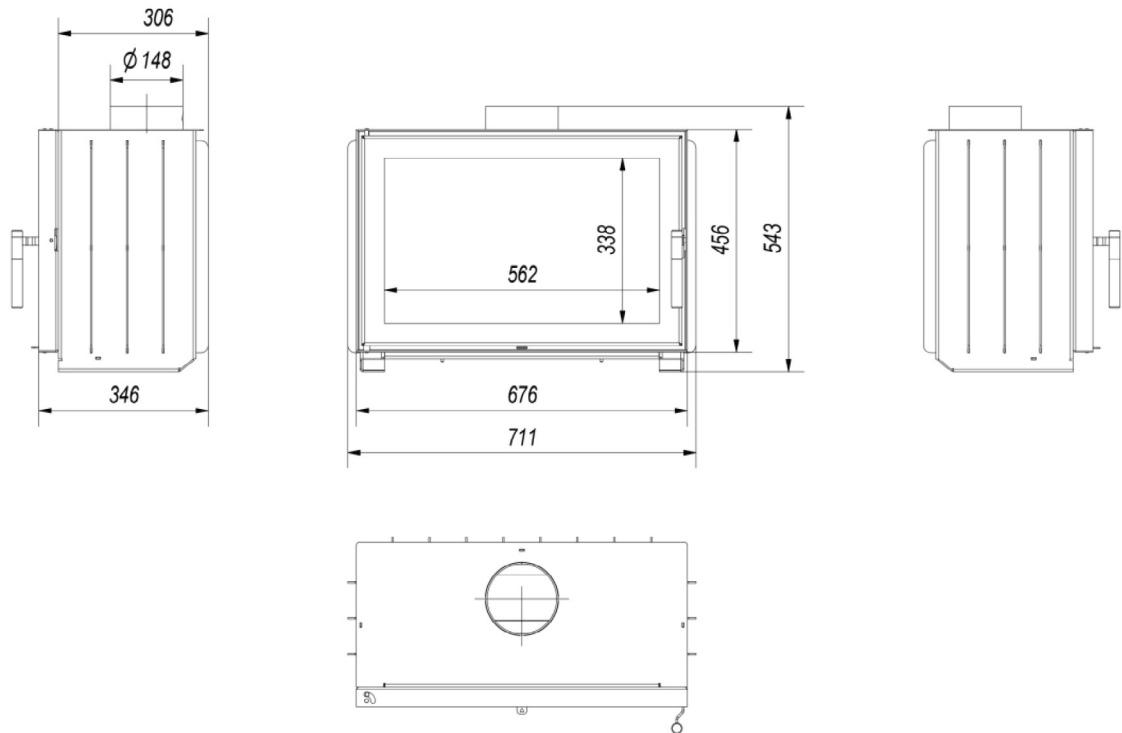
Configurations

Front Facing Glass



JAS

The Kratki JAS is part of our built-in fireplace range and is manufactured with 4mm thick steel and Acumotte lining. Its minimalist design is compact and powerful. Perfect heating solution for spaces up to 250m³.



Technical

- Rated output: 7 kW
- Heating Power Range: 3.3-9.9kW
- Heating Efficiency: 71 %
- Weight of Fireplace: ~ 82 kg
- Exhaust Flue Diameter: 150 mm
- Max Log length: 500 mm
- CO emissions (at 13% O₂) ≤ given in %: 0.15
- Energy Efficiency Index (EEL): 93.66
- Average flue gas temperature: 316°C
- Dimensions (HxWxD): 54.3 x 71.1 x 34.6 cm

Configurations

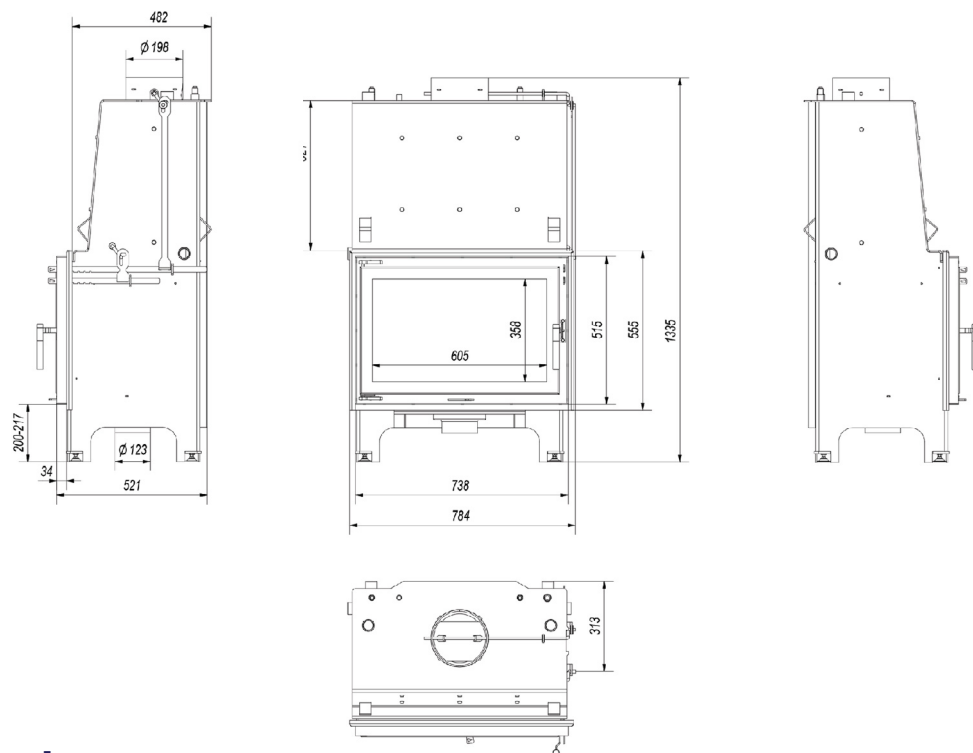
Front Facing Glass



Aquario16

PW/W

Aquario insert is a water-jacket device with a corpus built of double steel walls. The space between them is filled with water that receives heat and transfers it to the heating system. This hydronic heater is ideal for tough and cold winter conditions such as in the Australian alpine regions.



Technical

Rated output: 16 kW
Heating Power Range: 7-19 kW
Heating Power (Water): 9kW
Heating Efficiency: 82 %
Weight of Fireplace: ≈ 305 kg
Exhaust Flue Diameter: 200 mm
Max Log length: 550 mm
CO emissions (at 13% O ₂) ≤ given in %: 0.1
Energy Efficiency Index (EEI): 108
Average flue gas temperature: 215°C
Dimensions (HxWxD): 133.5 x 78.4 x 52.1 cm

Configurations

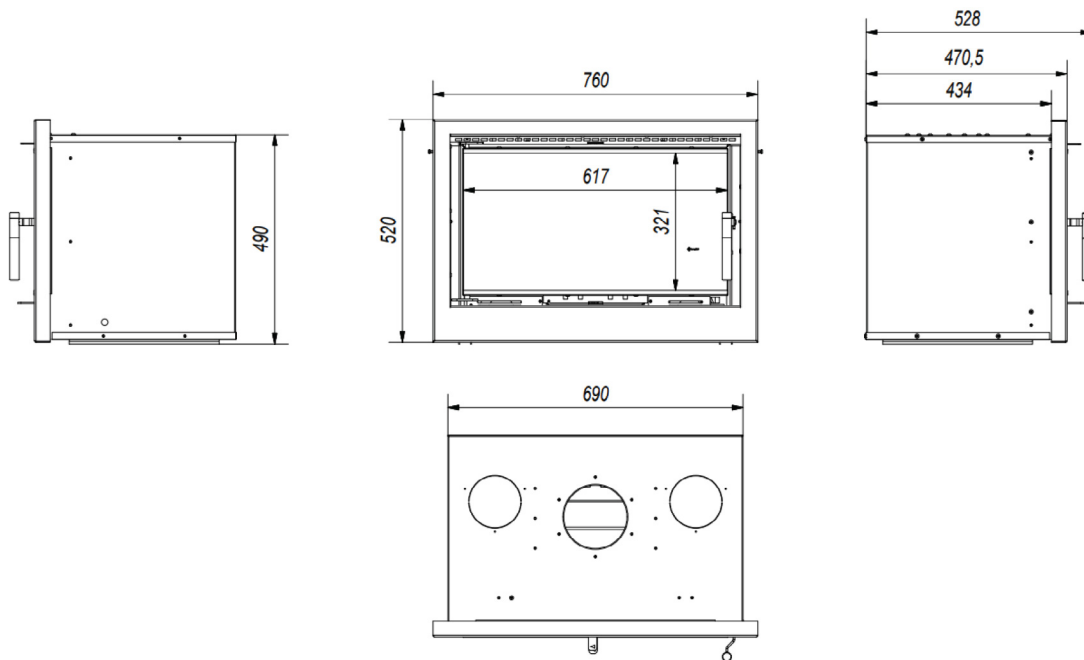
Front Facing Glass



Kaseta

Arke 70

Kaseta Arke is a closed door, fan forced fireplace, largely used to upgrade older open faced fireplaces. Arke provides a safer, more efficient alternative, which can be installed in existing fireplaces spaces or individually installed. This insert is available in three sizes. This is the Smallest. This model can be converted to supply central heating.



Technical

Rated output: 8 kW
Heating Power Range: 3.5-10kW
Heating Efficiency: 84 %
Weight of Fireplace: ≈ 110 kg
Exhaust Flue Diameter: 150 mm
Max Log length: 550 mm
CO emissions (at 13% O ₂) ≤ given in %: 0
Energy Efficiency Index (EEL): 110.62
Average flue gas temperature: 165°C
Dimensions (HxWxD): 52 x 76 x 52.8 cm

Configurations

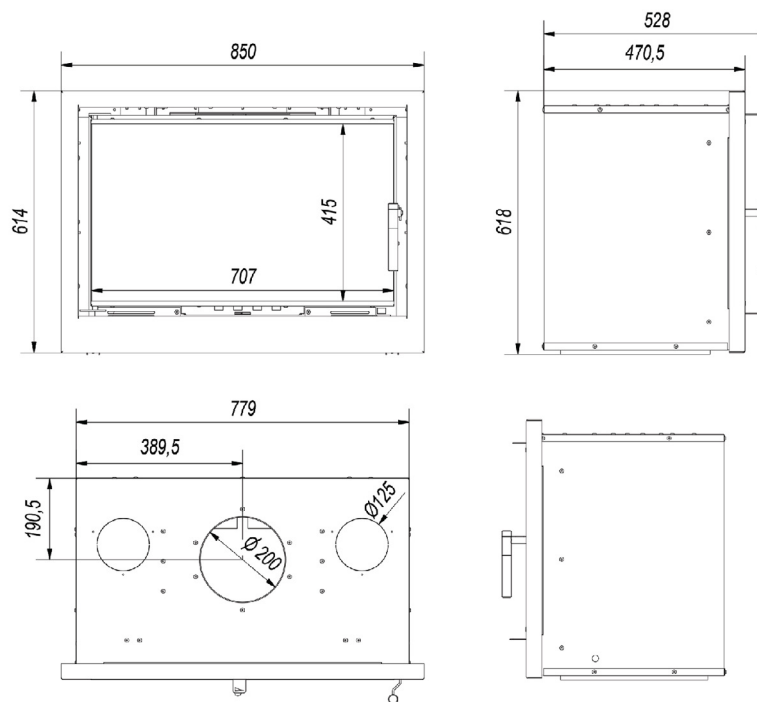
Front Facing Glass



Kaseta

Arke 80

Kaseta Arke is a closed door, fan forced fireplace, largely used to upgrade older open faced fireplaces. Arke provides a safer, more efficient alternative, which can be installed in existing fireplaces spaces or individually installed. This insert is available in three sizes. This is the Mid size. This model can be converted to supply central heating.



Technical

Rated output: 12 kW

Heating Power Range: 6-16kW

Heating Efficiency: 75 %

Weight of Fireplace: ≈ 132 kg

Exhaust Flue Diameter: 200 mm

Max Log length: 650 mm

CO emissions (at 13% O₂) ≤ given in %: 0.1

Energy Efficiency Index (EEI): 98.88

Average flue gas temperature: 320°C

Dimensions (HxWxD): 61.8 x 85 x 52.8 cm

Configurations

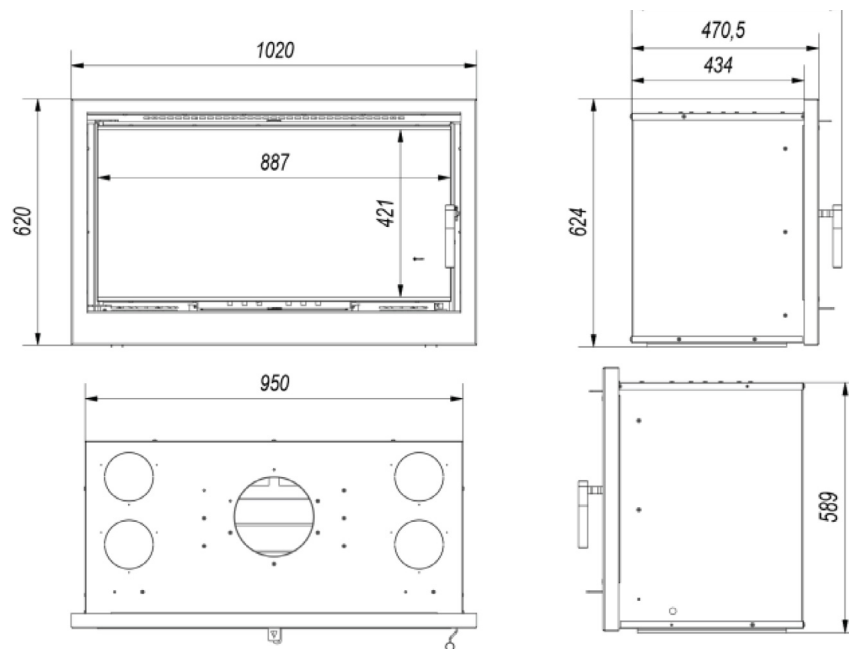
Front Facing Glass



Kaseta

Arke 95

Kaseta Arke is a closed door, fan forced fireplace, largely used to upgrade older open faced fireplaces. Arke provides a safer, more efficient alternative, which can be installed in existing fireplaces spaces or individually installed. This insert is available in three sizes. This is the Largest size, and is able to heat large spaces and houses. This model can be converted to supply central heating, and is equipped to duct into 4 adjoining rooms.



Technical

Rated output: 14 kW

Heating Power Range: 6-16.5kW

Heating Efficiency: 83 %

Weight of Fireplace: ~ 154 kg

Exhaust Flue Diameter: 200 mm

Max Log length: 800 mm

CO emissions (at 13% O₂) ≤ given in %: 0.1

Energy Efficiency Index (EEI): 109.32

Average flue gas temperature: 195°C

Dimensions (HxWxD): 62.4 x 102 x 52.8 cm

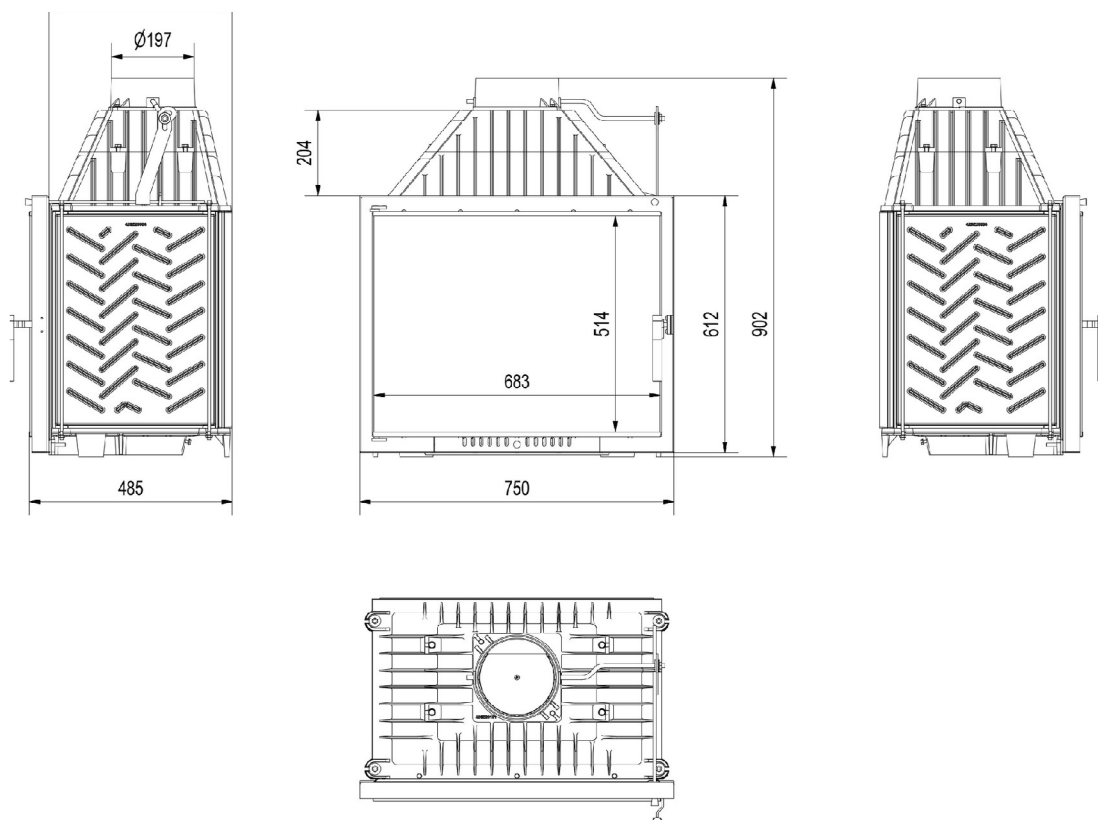
Configurations

Front Facing Glass



Amelia

Fireplace insert characterised by timeless design will be the best option for people looking for classical insert. Its robust cast iron construction and ribbed surface allows for premium heat exchange.



Technical

Rated output: 21 kW
Heating Power Range: 11.5-29kW
Heating Efficiency: 75 %
Weight of Fireplace: ≈ 176 kg
Exhaust Flue Diameter: 200 mm
Max Log length: 650 mm
CO emissions (at 13% O ₂) ≤ given in %: 0.22
Energy Efficiency Index (EEI): 98.875
Average flue gas temperature: 390°C
Dimensions (HxWxD): 133.1 x 75 x 48.5 cm

Configurations

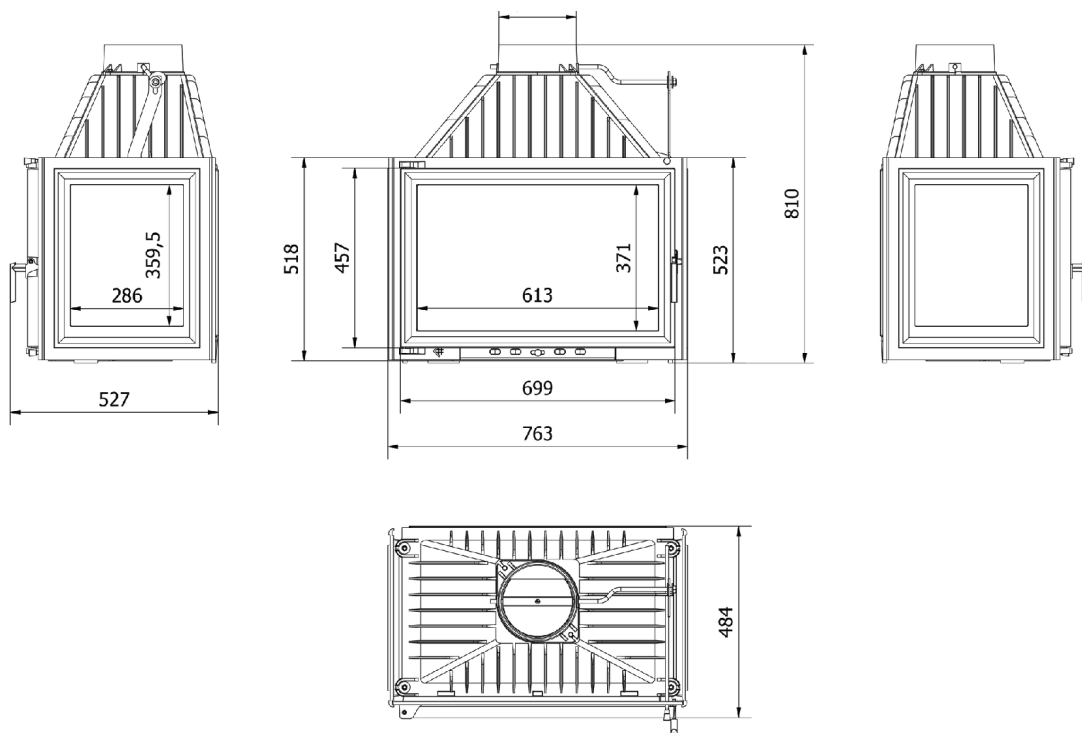
- Uno - Front Facing Glass
- Tunnel - Front and Back Facing Glass
- Quatro - Four Sided Glass



Oliwia

LP

Fireplace insert characterised by timeless design will be the best option for people looking for classical insert. Its three sided glass face will provide a beautiful view of combustion. Its robust cast iron construction and ribbed surface allows for premium heat exchange.



Technical

Rated output: 16 kW
Heating Power Range: 9-23kW
Heating Efficiency: 76 %
Weight of Fireplace: ≈ 194 kg
Exhaust Flue Diameter: 200 mm
Max Log length: 550 mm
CO emissions (at 13% O ₂) ≤ given in %: 0.14
Energy Efficiency Index (EEL): 100.9
Average flue gas temperature: 375°C
Dimensions (HxWxD): 81 x 76.3 x 52.7 cm

Configurations

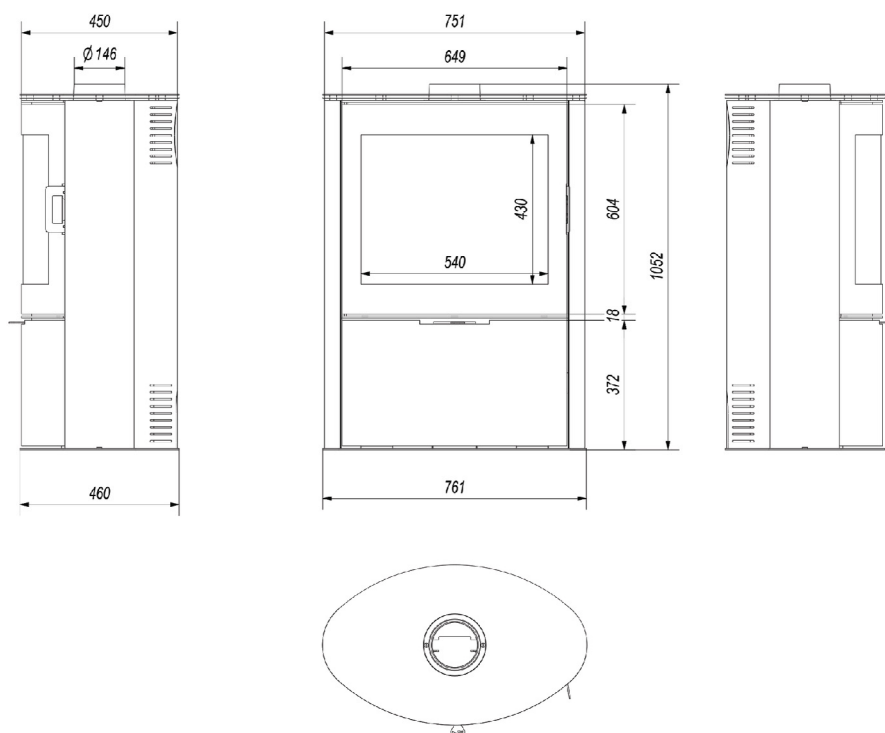
Three Sided Glass



Koza

AB/S/2

Stove AB with cylindrical, modern design is a great solution for people who long for warmth, but do not have a large space in their interior.



Technical

Rated output: 10 kW Eu / 9.5kW Au

Heating Power Range: 4-12kW

Heating Efficiency: 80 % Eu / 61% Au

Weight of Fireplace: ≈ 149 kg

Exhaust Flue Diameter: 150 mm

Max Log length: 500 mm

CO emissions (at 13% O₂) ≤ given in %: 0

Energy Efficiency Index (EEI): 105.4

Average flue gas temperature: 280°C

Dimensions (HxWxD): 105.2 x 76.1 x 46 cm

Particulate Emission Factor: 0.9g/Kg

Configurations

Front Facing Glass



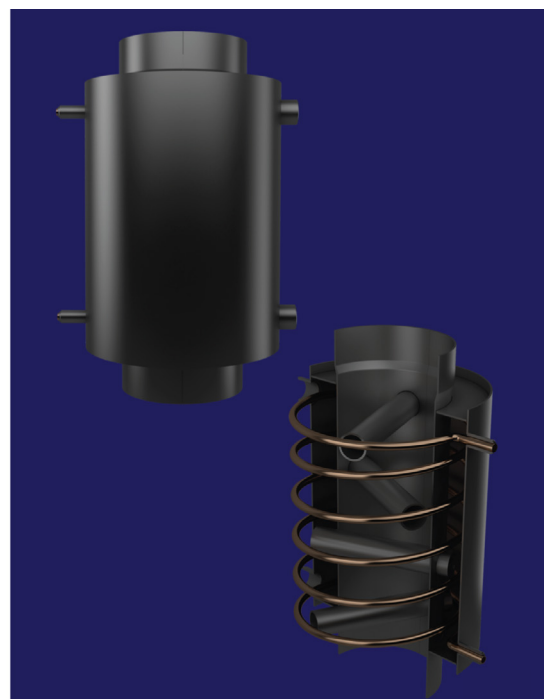
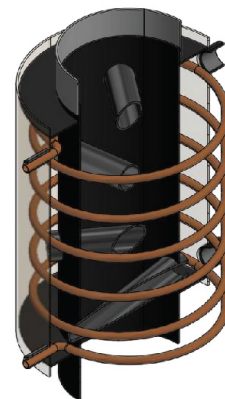
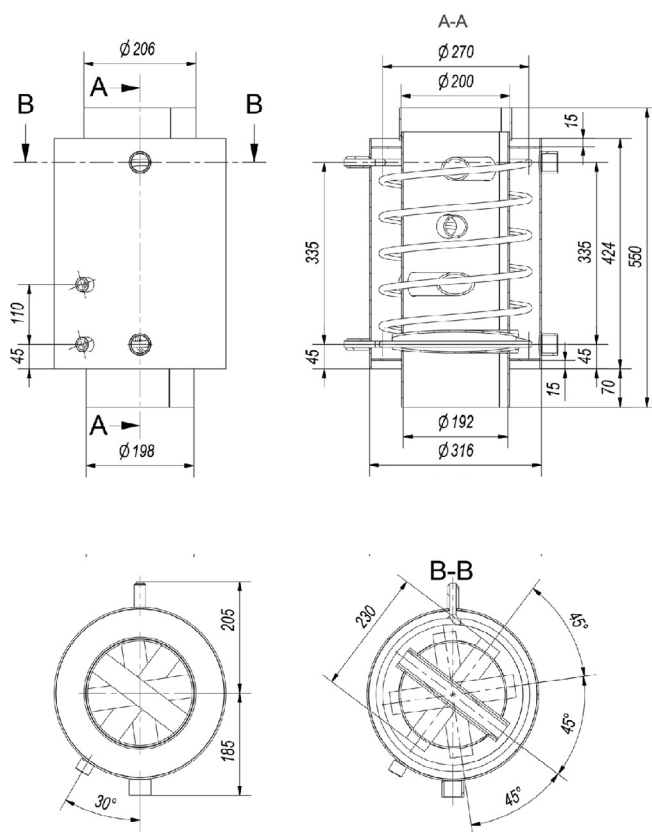
Turbodym

200 Hot Water Jacket Accessory

Turbodym is a fireplace cowl designed to be mounted on the exhaust outlet from the fireplace. The task of the element is to recover some of the thermal energy from the exhaust gases leaving the combustion chamber of the fireplace insert.

Heat is transferred further to domestic hot water or, through a central heating system, to radiators in residential areas.

It is a very economical source of heat, because it does not require the use of additional fuel, it only uses the excess heat in the exhaust gases flowing to the chimney. Hot exhaust gases flow through the turbodym, heating the water in the exchanger's jacket. Hot water is led out via a spigot located at the side wall of the exchanger.



Technical

Weight: 25 Kg

Dimensions (HxWxD): 60 x 2 x 4 cm

Power to water: approx 11kW

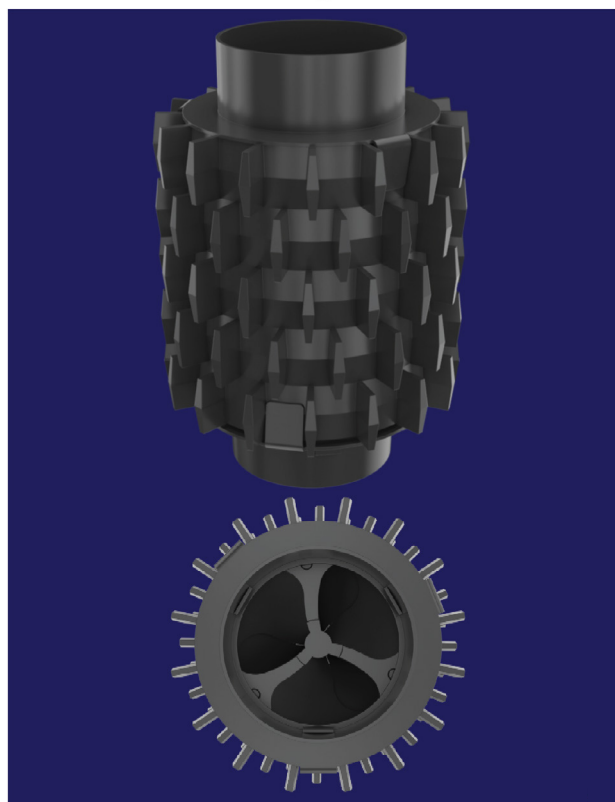
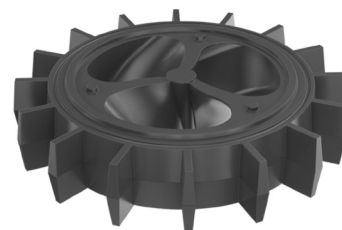
Heat Storage Rings

Cast Iron Modular Heat - Storage Unit Set of 5 Rings and 2 Collars Accessory

The traditional connection of a fireplace, a large part of energy is taken away with the exhaust outside the chimney. One of the ways to reduce the temperature of exhaust gases, and thus increase the efficiency of the fireplace is to use accumulation Rings that can recover up to 30% of escaping heat, and provide heat for up to 6 hours after your fire is extinguished.

Accumulation Rings force a spiral trajectory of exhaust gases, thus extending their path and removing heat from them. Due to the densely-placed heat radiators, they ensure good heat exchange with the air flowing through them. Eventually, more heat is used to heat rooms. Thus, the thermal efficiency of the heating system increases.

They are mounted at fireplace inserts, using specially made supports. The weight of the Rings is the protection against possible displacement, it ensures sealing the air flow ducts and a special system of slots. The number of Rings depends on the planned characteristics of the furnace.



Technical

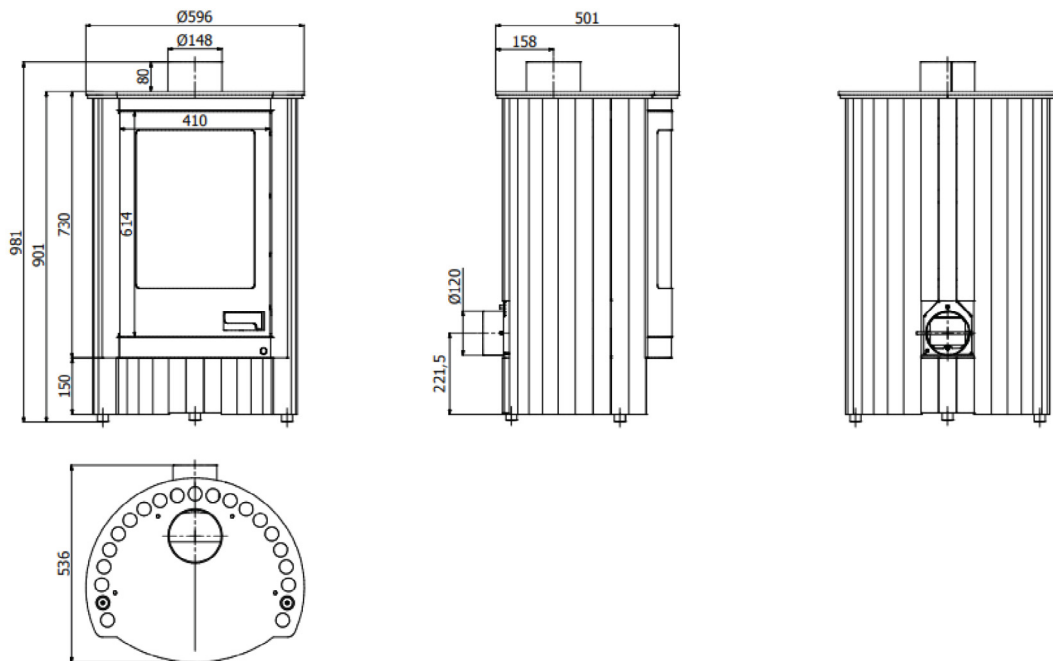
Weight: 111 Kg



Piccolo

Masterflamme

This beautiful HS-Flamingo hot air oven features timeless looks, and convenient functionality. It boasts an easily removable ash tray and a self closing combustion chamber door. Its pipe style body is purpose built to facilitate ultra fast heating. The masterflamme range is available in 3 sizes with this being the smallest.



Technical

- Rated output: 7 kW Eu / 11 kW Au
- Heating Power Range: 3-11kW
- Heating Efficiency: 79 % Eu / 63% Au
- Weight of Fireplace: ≈ 128 kg
- Exhaust Flue Diameter: 150 mm
- Max Log length: 420 mm
- CO emissions (at 13% O₂) ≤ given in %: 0.091
- Average flue gas temperature: 278°C
- Dimensions (HxWxD): 98.1 x 59.6 x 53.6 cm
- Particulate Emission Factor: 0.7g/Kg

Configurations

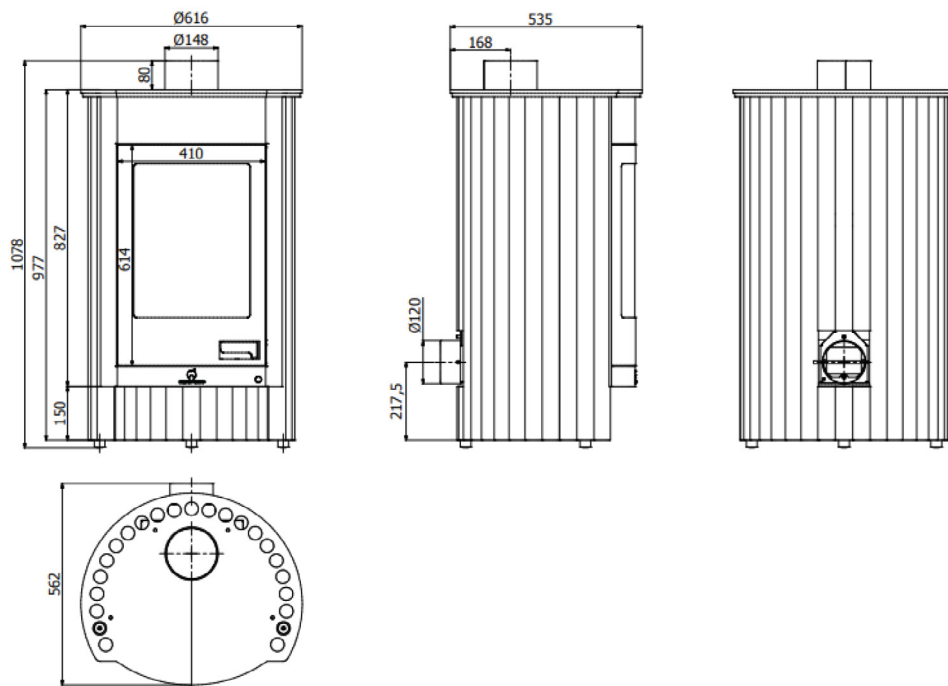
Available Colours: Black, Brown or Metallic Cream



Medie

Masterflamme

This beautiful HS-Flamingo hot air oven features timeless looks, and convenient functionality. It boasts an easily removable ash tray and a self closing combustion chamber door. Its pipe style body is purpose built to facilitate ultra fast heating. The masterflamme range is available in 3 sizes with this being the mid size.



Technical

Rated output: 12 kW
Heating Power Range: 8-16kW
Heating Efficiency: 79 %
Weight of Fireplace: ≈ 152 kg
Exhaust Flue Diameter: 150 mm
Max Log length: 460 mm
CO emissions (at 13% O ₂) ≤ given in %: 0.093
Average flue gas temperature: 299°C
Dimensions (HxWxD): 107.8 x 61.6 x 56.2 cm

Configurations

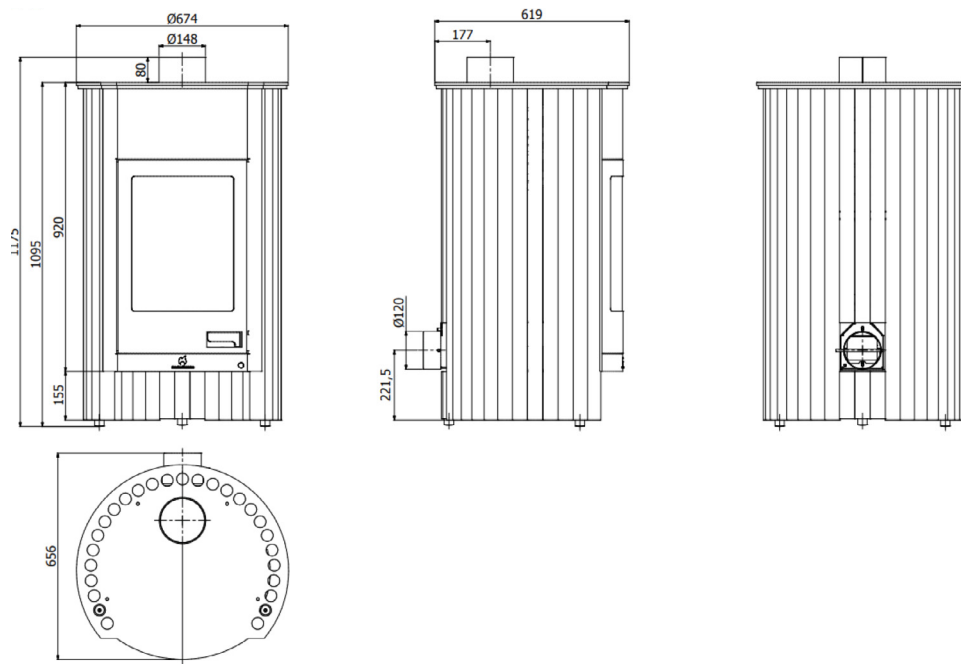
Available Colours: Black, Brown or Metallic Cream



Grande

Masterflamme

This beautiful HS-Flamingo hot air oven features timeless looks, and convenient functionality. It boasts an easily removable ash tray and a self closing combustion chamber door. Its pipe style body is purpose built to facilitate ultra fast heating. The masterflamme range is available in 3 sizes with this being the Largest size. At the moment this fireplace is the most powerful freestanding heater in Australia.



Technical

- Rated output: 17 kW Eu / 16.9 kW Au
- Heating Power Range: 13-21kW
- Heating Efficiency: 78 % Eu / 71 % Au
- Weight of Fireplace: ≈ 193 kg
- Exhaust Flue Diameter: 150 mm
- Max Log length: 520 mm
- CO emissions (at 13% O₂) ≤ given in %: 0.095
- Average flue gas temperature: 320°C
- Dimensions (HxWxD): 117.5 x 67.4 x 65.6 cm
- Particulate Emission Factor: 1.0g/Kg

Configurations

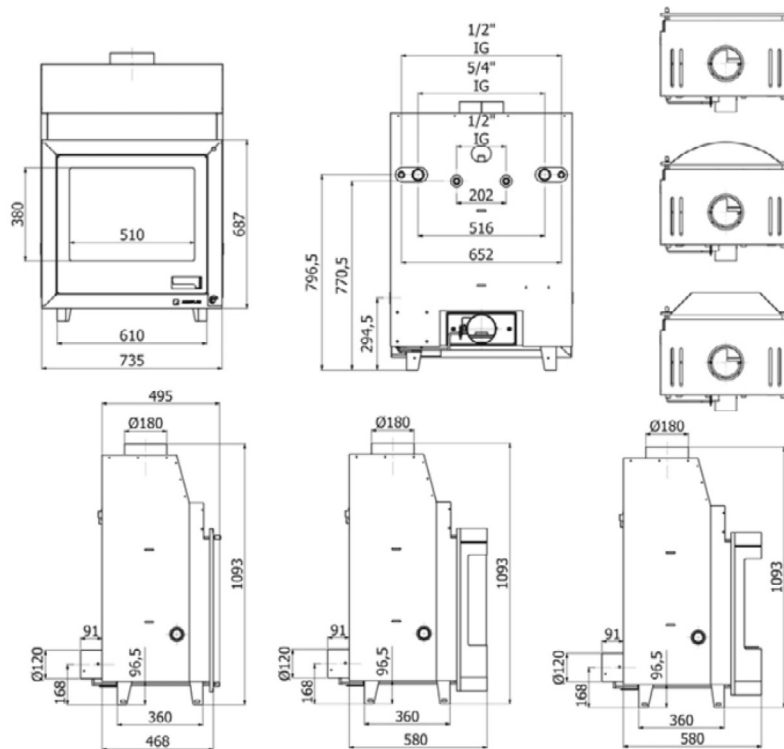
Available Colours: Black, Brown or Metallic Cream



Aquaflame

25

AQUAFLAM wood boiler Insert is made of high end materials, and features a cooling circuit for added safety, double rinsing glass for minimal soot accumulation and improved energy transfer to the boiler resulting in more efficient water heating.



Technical

- Rated output: 25 kW
- Heating Power (Water): 21kW
- Heating Power Range: 21-30kW
- Heating Efficiency: 78 %
- Weight of Fireplace: ≈ 214 kg
- Exhaust Flue Diameter: 180 mm
- Max Log length: 550 mm
- CO emissions (at 13% O₂) ≤ given in %: 0.1
- Average flue gas temperature: 278°C
- Dimensions (HxWxD): 109.3 x 73.5 x 58 cm

Configurations

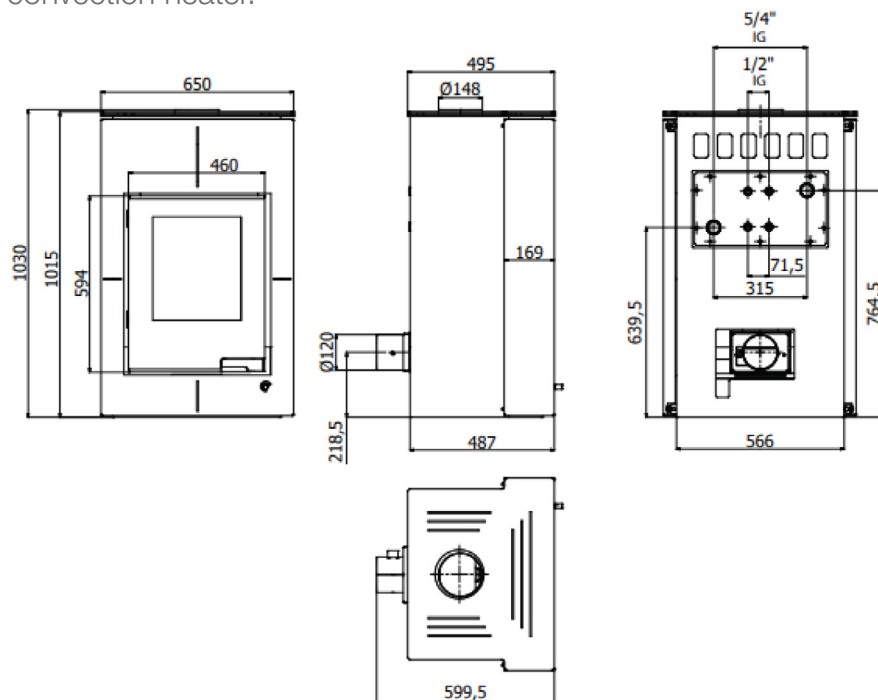
Front Facing Flat Glass



Aquaflame

Vario Sapporo

Featuring secondary combustion technology Aquaflame Vario Sapporo uniquely offers an easy transition from hot water to hot air heating. Made of the highest quality materials and equipped with a cooling loop as standard, protecting against overheating. Tertiary air supply for perfect combustion and constant air supply. This fireplace only requires 30 minutes to reverse from a water jacket to a convection heater.



Technical

Rated output: 11 kW
Heating Power Range: 7-15kW
Heating Power (Water): 7 kW
Heating Efficiency: 80.27 %
Weight of Fireplace: ≈ 185 kg
Exhaust Flue Diameter: 150 mm
Max Log length: 400 mm
CO emissions (at 13% O ₂) ≤ given in %: 0.093
Average flue gas temperature: 267°C
Dimensions (HxWxD): 103 x 65 x 60 cm

Configurations

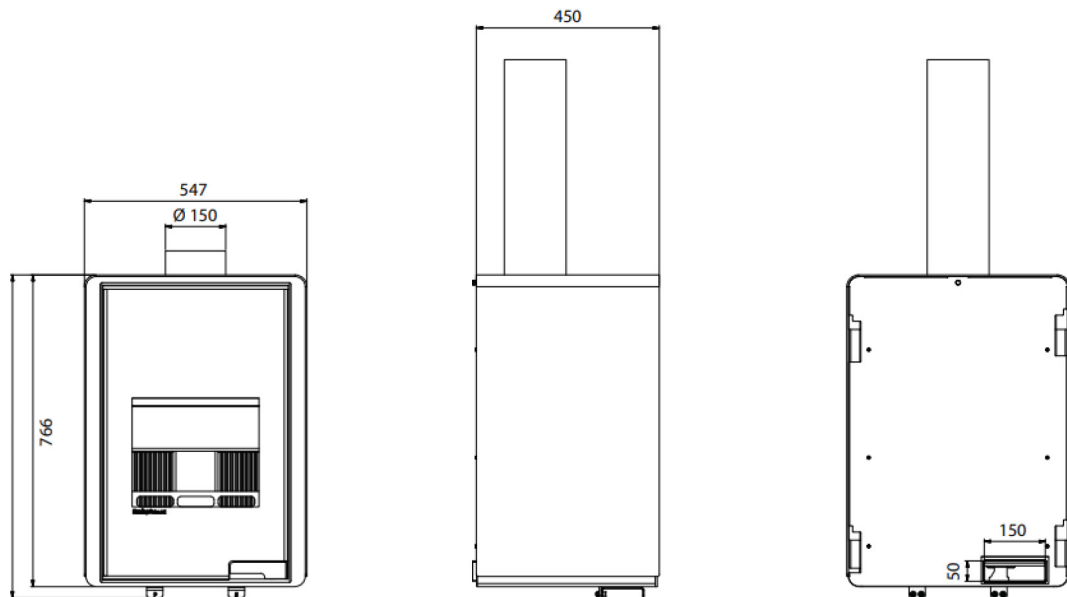
- Front facing Glass
- Heat Exchange Unit



Deluxe

Malia

The Malia Deluxe is a unique model featuring multiple variations of display. This burner will compliment your homes interior design, without compromising efficiency.



Technical

Rated output: 9 kW Eu / 12kW Au

Heating Power Range: 3-11kW

Heating Efficiency: 80.17 % Eu/ 65% Au

Weight of Fireplace: ≈ 151 kg

Exhaust Flue Diameter: 150 mm

Max Log length: 350 mm

CO emissions (at 13% O₂) ≤ given in %: 0.077

Average flue gas temperature: 287°C

Dimensions (HxWxD): 79.4 x 54.7 x 45 cm

Particulate Emission Factor: 0.7g/Kg

Configurations

Malia - Stand alone fire place

Senai - Bottom Facing Triangle Holder

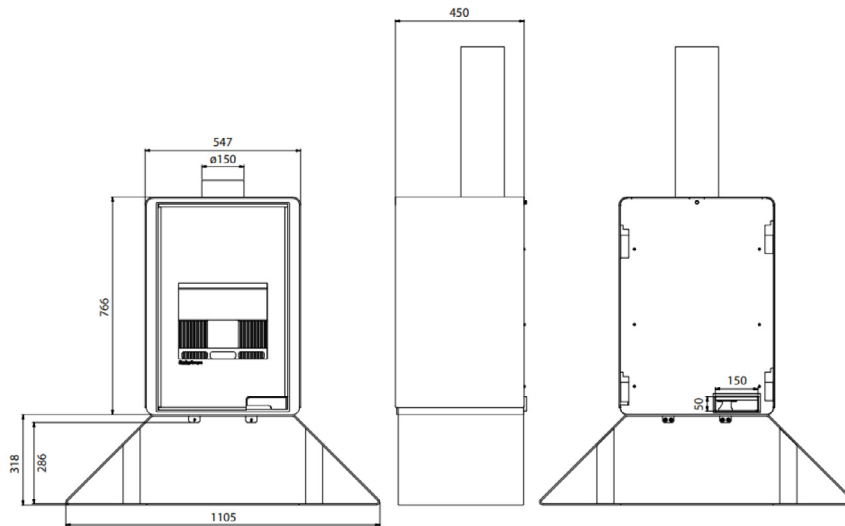
Pentai - Bottom Facing Box Holder

Kampa - L or R Facing 'L' Shape Holder

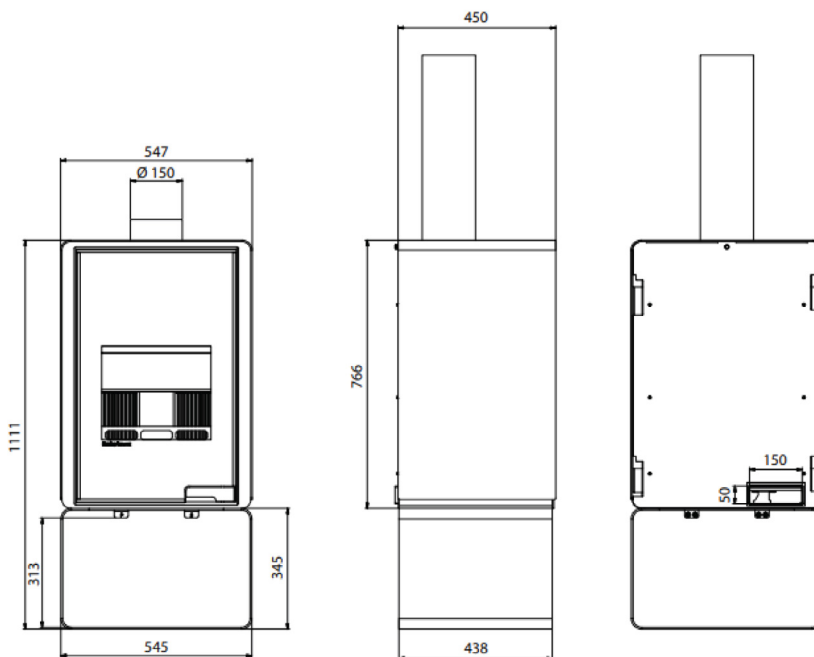


Deluxe

Senai

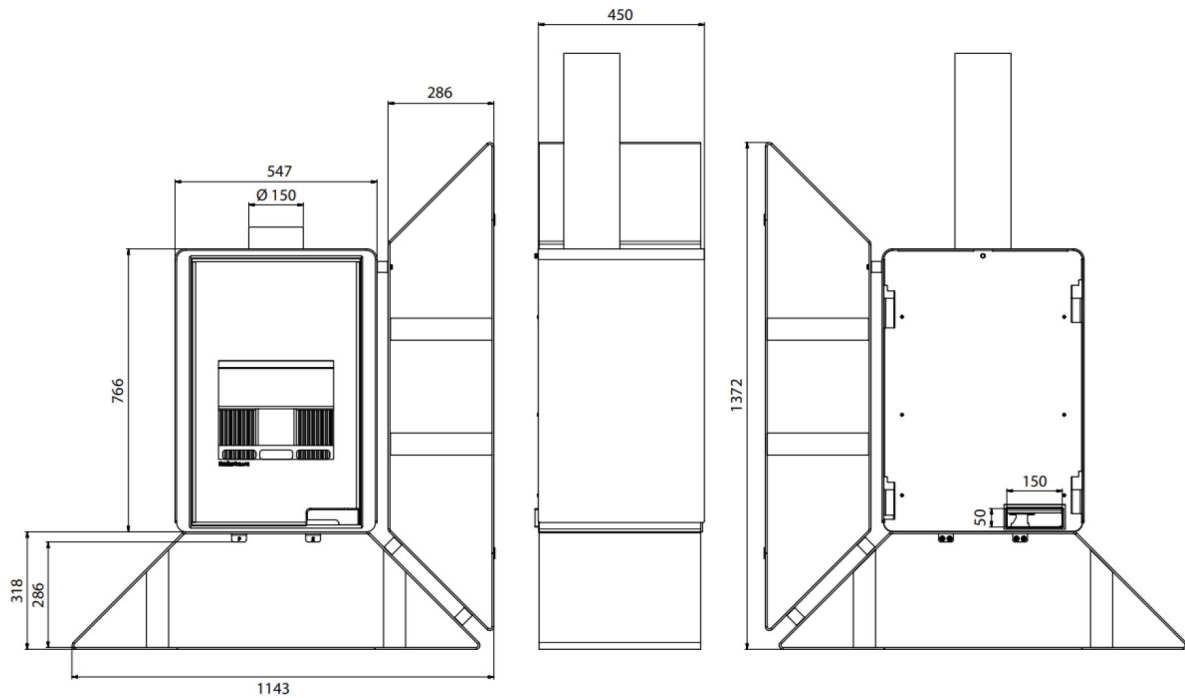


Pentai



Deluxe

Kampa



Left



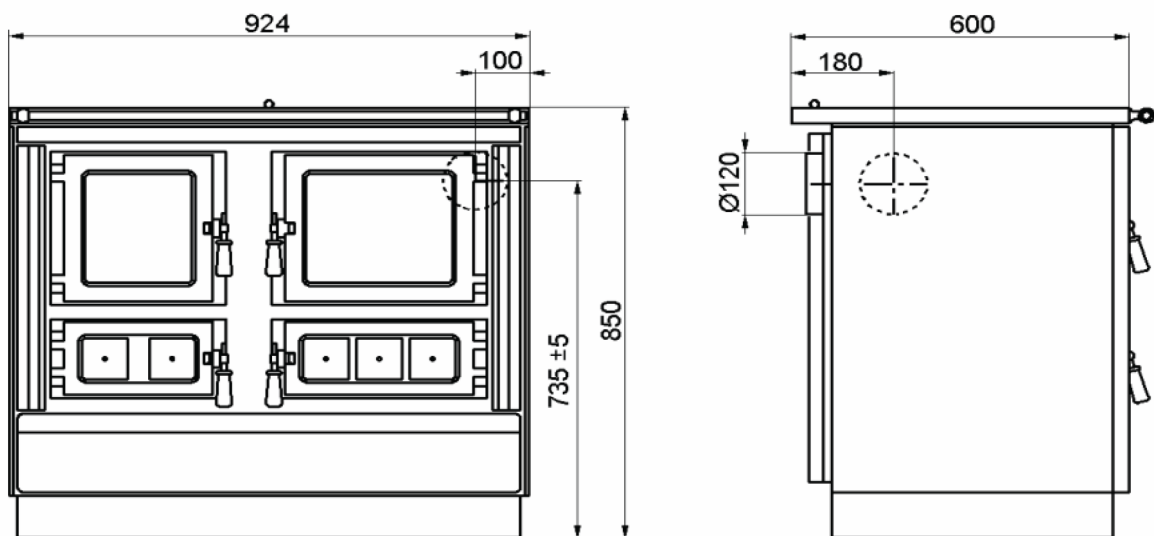
Right



Moravia 9112

Free Standing Cooker

This unit combines the advantages of a fireplace stove and cooker because apart from cooking, roasting/baking and heating it is fascinating that it is possible to see flickering flames through the glazed door of the firebox.



Technical

Rated output: 8.5 kW

Heating Power Range: 7-10kW

Heating Efficiency: 75 %

Weight of Fireplace: ≈ 175 kg

Exhaust Flue Diameter: 120 mm

Max Log length: 450 mm

CO emissions (at 13% O₂) ≤ given in %: 0.08

Average flue gas temperature: 190°C

Dimensions (HxWxD): 85 x 92.4 x 60 cm

Configurations

Unit Comes In Left or Right Configurations

Available Colours: Bordeaux, White, Green, Black

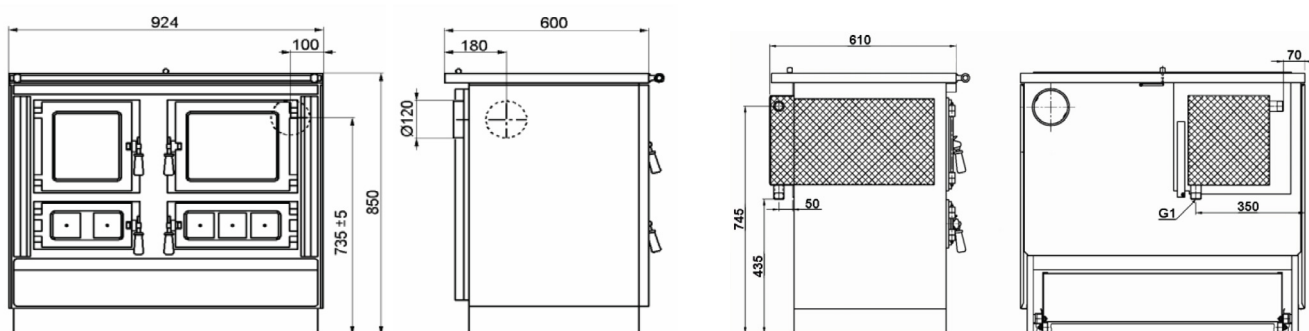
**Heat Exchange Unit - {Hot Water Heater}



Moravia 9112

Free Standing Cooker With **Heat Exchange Unit

The KVS MORAVIA 9112-HEU type solid-fuel range cooker with a heat exchange unit (exchanger) combines the advantages of an appliance designed for cooking, baking/roasting meals and a central heating boiler.



Technical

Rated output: 9 kW

Heating Power Range: 3.5-9kW

**Heating Power (Water): 5.5kW

Heating Efficiency: 75 %

Weight of Fireplace: ≈ 175 kg

Exhaust Flue Diameter: 120 mm

Max Log length: 450 mm

CO emissions (at 13% O₂) ≤ given in %: 0.08

Average flue gas temperature: 190°C

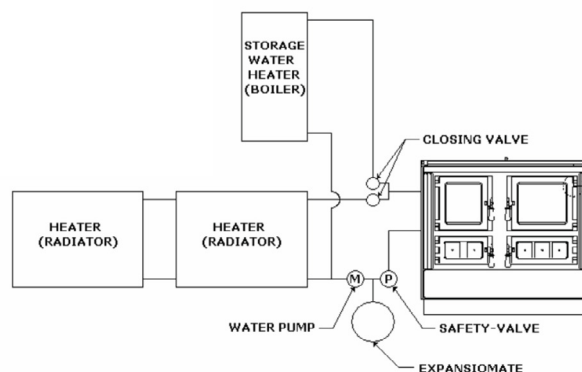
Dimensions (HxWxD): 85 x 92.4 x 61 cm

Configurations

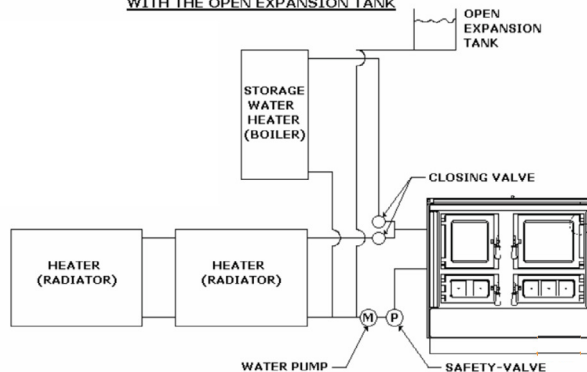
Unit Comes In Left or Right Configurations

Available Colours: Bordeaux, White, Green, Black

INSTRUCTIONS SCHEME FOR CONNECTION WITH THE EXPANSIOMATE



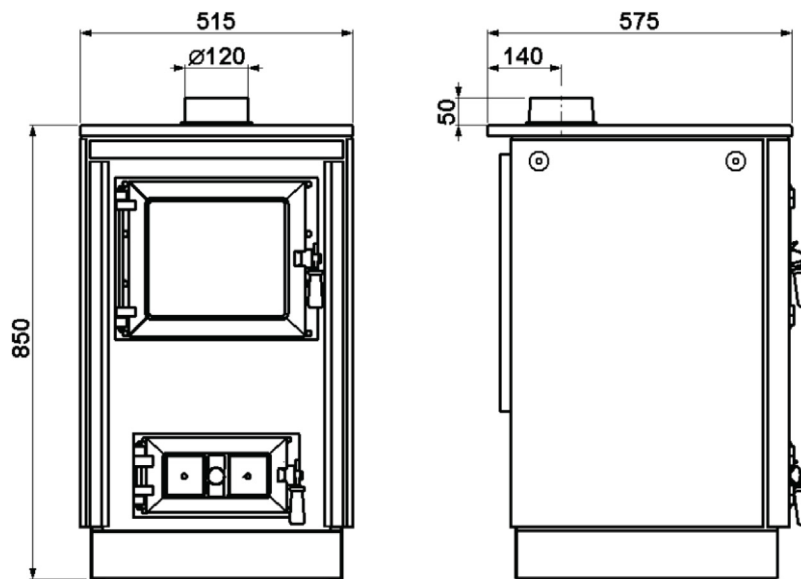
INSTRUCTIONS SCHEME FOR CONNECTION WITH THE OPEN EXPANSION TANK



Moravia 9114

Solid Fuel Stove

This stove designed in a rustic style has already attracted a number of customers, who appreciate, in particular, its appearance, the glazed door of the firebox and the possibility to (re)- heat or cook meals thanks to the hob with which it is fitted.



Technical

Rated output: 7.1 kW Eu/ 6.3 kW Au

Heating Power Range: 7-9kW

Heating Efficiency: 77.9% Eu / 63% Au

Weight of Fireplace: ≈ 130 kg

Exhaust Flue Diameter: 120 mm

Max Log length: 350 mm

CO emissions (at 13% O₂) ≤ given in %: 0.09

Average flue gas temperature: 261°C

Dimensions (HxWxD): 85 x 51.5 x 57.5 cm

Particulate Emission Factor: 0.8g/Kg

Configurations

Available Colours: Bordeaux, White, Green, Black

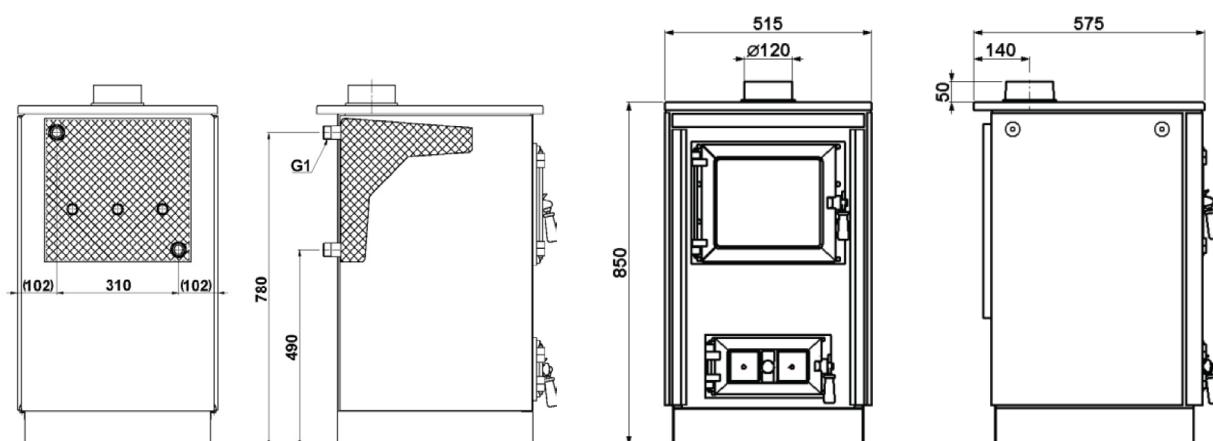
**Heat Exchange Unit - {Hot Water Heater}



Moravia 9114

Solid Fuel Stove With **Heat Exchange Unit

The KVS MORAVIA 9114- HEU type solid-fuel range stove with a heat exchange unit (exchanger) combines the advantages of an appliance designed for cooking, (re)-heating of meals and a central heating boiler.



Technical

Rated output: 7.8 kW

Heating Power Range: 4.5-7.8kW

**Heating Power (Water): 7kW

Heating Efficiency: 78.6%

Weight of Fireplace: ≈ 130 kg

Exhaust Flue Diameter: 120 mm

Max Log length: 350 mm

CO emissions (at 13% O₂) ≤ given in %: 0.09

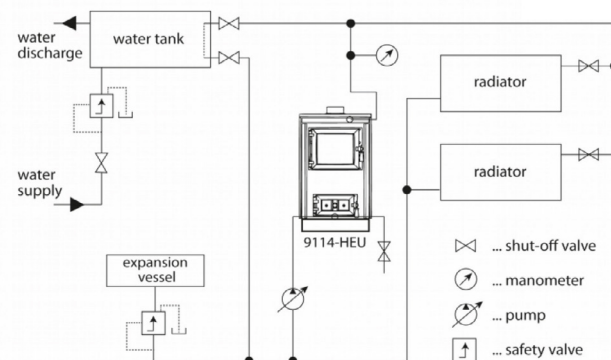
Average flue gas temperature: 277°C

Dimensions (HxWxD): 85 x 51.5 x 57.5 cm

Configurations

Available Colours: Bordeaux

Scheme of the connection to the central heating system

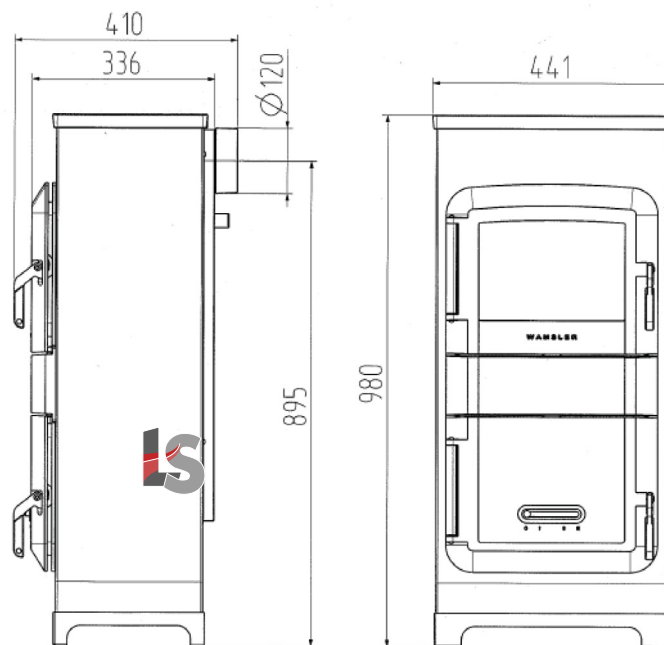




Kamino

Trendy

With its deep combustion chamber and quality fireclay, this model fits any modern home. It is a model with a slow combustion function. The solid cast iron cooktop provides ample space for pots and pans and is always ready for use for heating.



Technical

Rated output: 8 kW Eu/ 7.4kW Au

Heating Power Range: 4-8.2kW

Heating Efficiency: 78.4 % Eu / 64% Au

Weight of Fireplace: ~ 117 kg

Exhaust Flue Diameter: 120 mm

Max Log length: 330 mm

CO emissions (at 13% O₂) ≤ given in % ≈ 0.06

Average flue gas temperature: 353°C

Dimensions (HxWxD): 98 x 44.1 x 41 cm

Particulate Emission Factor: 0.7g/Kg

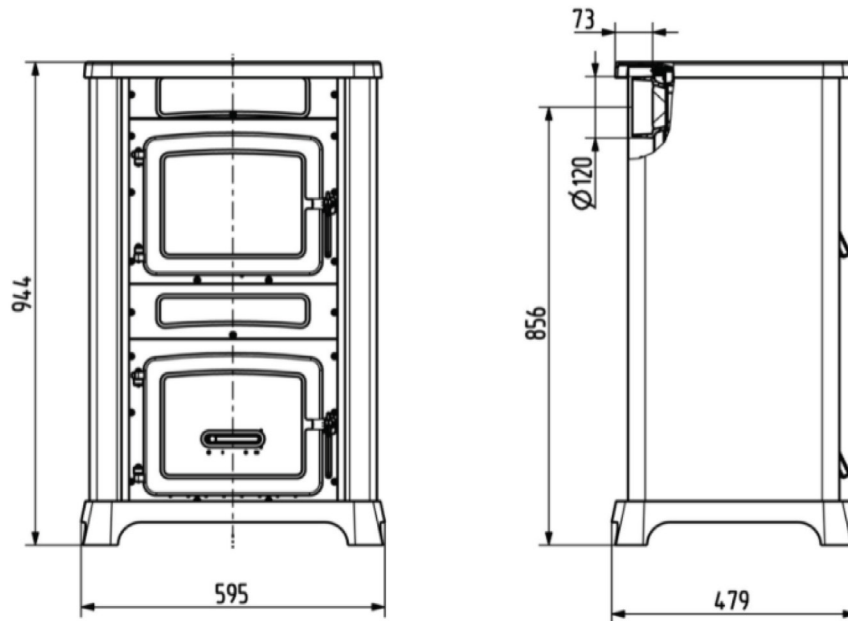
Configurations

Front Facing Glass



Bully

With its enamel coloured sides, the Bully variety combines a beautifully presented cast iron body with a sizeable ceramic lined combustion chamber, this combustion system has been proven to be second to none. This entry level heater is a popular solution for your heating needs.



Technical

Rated output: 8 kW Eu / 10.3 kW Au

Heating Power Range: 4-8.2kW

Heating Efficiency: 78 % Eu/ 68% Au

Weight of Fireplace: ~ 148 kg

Exhaust Flue Diameter: 120 mm

Max Log length: 330 mm

CO emissions (at 13% O₂) ≤ given in % ≈ 0.06

Average flue gas temperature: 353°C

Dimensions (HxWxD): 94.4 x 59.5 x 47.9 cm

Particulate Emission Factor: 1.1g/Kg

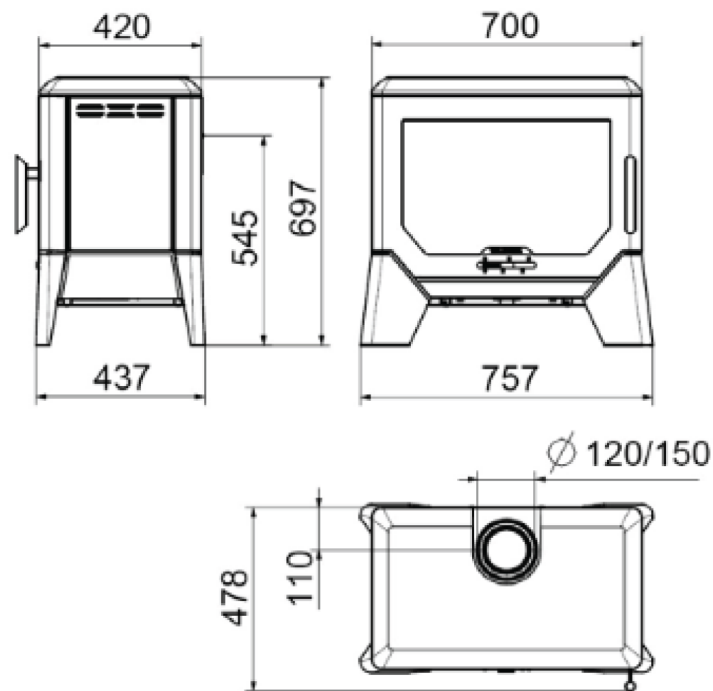
Configurations

Available Colours: Black & Red



F Box

The Wamsler F-Box stove combines tradition and modernity in a practical way. F-Box is made of solid cast iron and brings this into a new form in a modern, expressive design. This turns the stove into a compact and robust eyecatcher.



Technical

- Rated output: 8 kW Eu/ 12.9 kW Au
- Heating Power Range: 4-8.kW
- Heating Efficiency: 78.6 % Eu / 64% Au
- Weight of Fireplace: \approx 124 kg
- Exhaust Flue Diameter: 120/150 mm
- Max Log length: 500 mm
- CO emissions (at 13% O₂) \leq given in % \approx 0.06
- Average flue gas temperature: 336°C
- Dimensions (HxWxD): 69.7 x 75.7 x 47.8 cm
- Particulate Emission Factor: 1.4g/Kg

Configurations

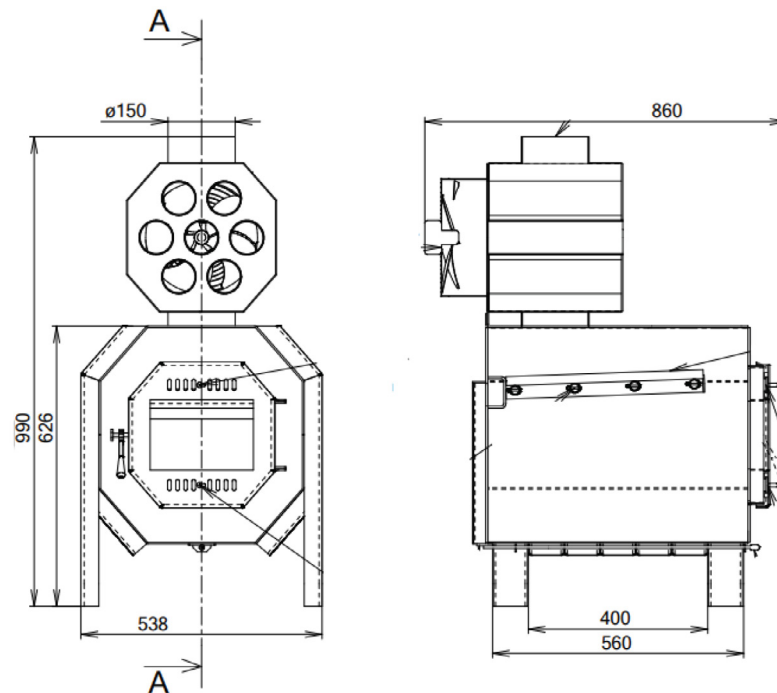
Front Facing Glass





Falco Eco

These hot-air wood stoves feature an exchanger and an automatic swivel fan to direct the hot air to where it's most needed in the room. They are perfectly designed for a multitude of settings including domestic such as living rooms, and larger spaces such as recreational facilities, industrial spaces and workplaces.



Technical

Rated output: 20 kW
Heating Power Range: 8-20kW
Heating Efficiency: 85 %
Weight of Fireplace: 129 kg
Exhaust Flue Diameter: 150 mm
Max Log length: 550 mm
CO emissions (at 13% O ₂) ≤ given in %: 0.09
Average flue gas temperature: 200°C
Dimensions (HxWxD): 99 x 53.8 x 86 cm

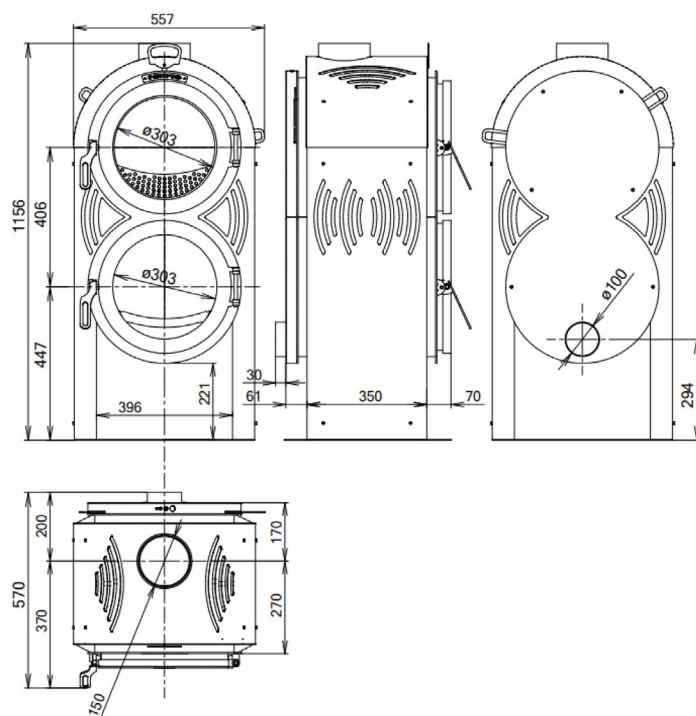
Configurations

Front Facing Glass



Nemo

By heating the stove in the upper chamber, wood gas is created. By closing the chimney flap of the upper primary chamber, the resulting wood gas begins to flow through the lower nozzle where it is oxygenated by preheated secondary air and burned at very high temperatures over 1000 degrees Celsius in the lower secondary combustion chamber. This revolutionary pyrolytic design creates a unique display which is second to none.



Technical

- Rated output: 9 kW Eu / 14.8 kW Au
- Heating Power Range: 3-9kW
- Heating Efficiency: 83 % Eu / 68% Au
- Weight of Fireplace: 178 kg
- Exhaust Flue Diameter: 150 mm
- Max Log length: 370 mm
- CO emissions (at 13% O₂) \leq given in %: 0.06
- Average flue gas temperature: 200°C
- Dimensions (HxWxD): 115.6 x 55.7 x 57 cm
- Particulate Emission Factor: 0.79g/Kg

Configurations

Front Facing Glass

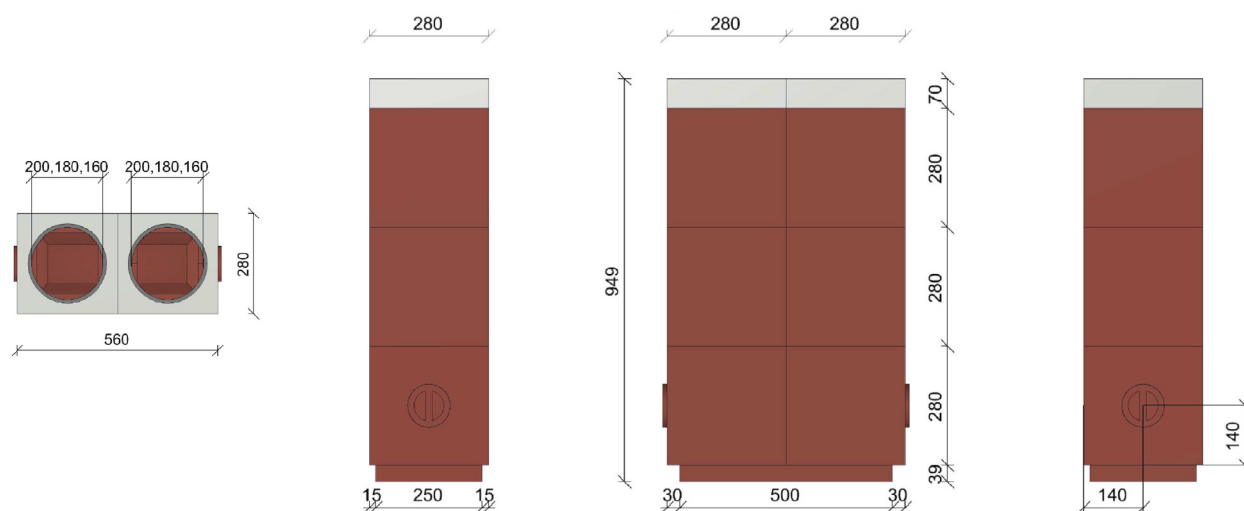




Set 1

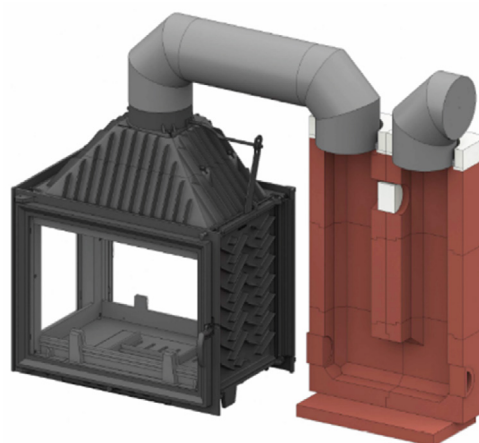
Prefabricated Ceramic Heat Storage

Ceramic Heat Storage Units are designed to capture heat traveling through the flue system, which would otherwise be wasted. It reduces the temperature of the exhaust gasses to approximately 150°C, for the correct operation of the flue. The energy accumulated is slowly radiated to your surrounds after the fire extinguishes. This increases the efficiency and heating cycle of any new or existing fireplace.



Technical

Weight: 270 kg
Height: 94.9 cm
Width: 56 cm
Depth: 28 cm
Chimney Draught: 12 Pa
Additional Firewood Load (<20% moisture): 3.7 kg
Amount of Stored Energy: 11.9 kWh
Heated Area @ 13 W/m ² in a 8hr cycle: 114 m ²



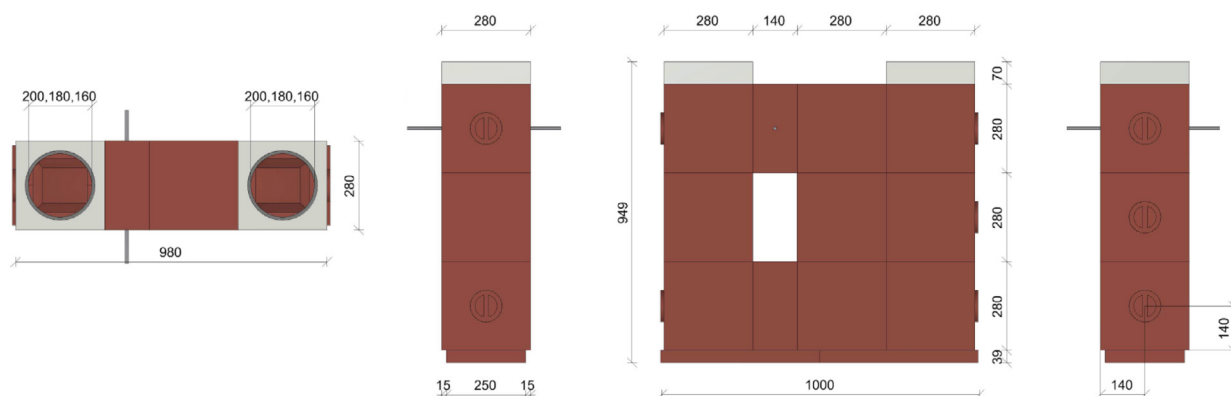
Components

CMA Straight 280 x 280 x 280 mm	- 2
CMA Straight with Cleaning Opening & Plug 280 x 280 x 280 mm	- 2
CMA Elbow 90° with Cleaning Opening & Plug 280 x 280 x 280 mm	- 2
Plug White with Chamfer	- 1
Flue Connection 70 x 280 x 280 mm	- 2
Sealing Rope 18 mm / 1.26 m	- 2
Base Plate 250 x 500 x 39 mm	- 1

Set 2

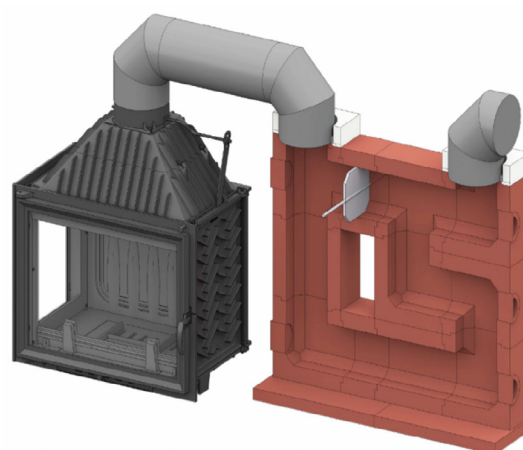
Prefabricated Ceramic Heat Storage

Ceramic Heat Storage Units are designed to capture heat traveling through the flue system, which would otherwise be wasted. It reduces the temperature of the exhaust gasses to approximately 150°C, for the correct operation of the flue. The energy accumulated is slowly radiated to your surrounds after the fire extinguishes. This increases the efficiency and heating cycle of any new or existing fireplace.



Technical

Weight: 430 kg
Height: 94.9 cm
Width: 98 cm
Depth: 28 cm
Chimney Draught: 13 Pa
Additional Firewood Load (<20% moisture): 6 kg
Amount of Stored Energy: 19.2 kWh
Heated Area @ 13 W/m ² in a 8hr cycle: 185 m ²



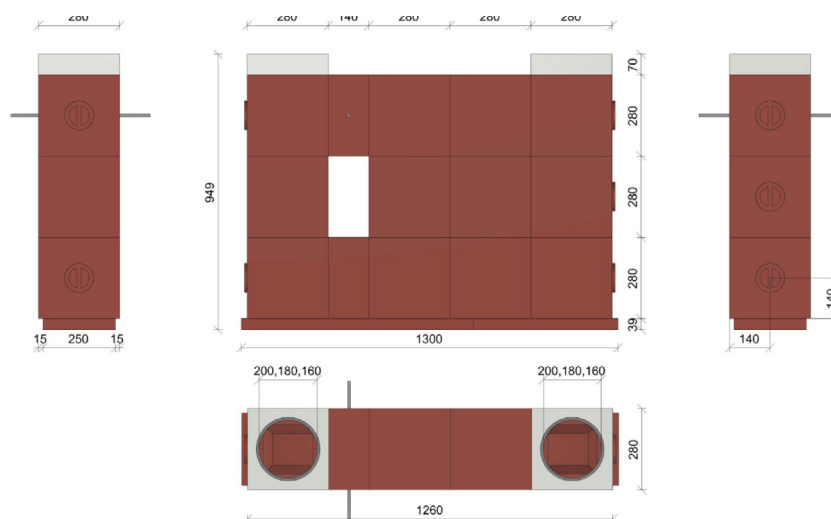
Components

CMA Straight 280 x 280 x 280 mm	- 2
CMA Half 140 x 280 x 280 mm	- 1
CMA Half with Damper 140 x 280 x 280 mm	- 1
CMA Elbow 90° 280 x 280 x 280 mm	- 1
CMA Elbow 90° with Cleaning Opening & Plug 280 x 280 x 280 mm	- 4
CMA 3 Way Module 280 x 280 x 280 mm	- 1
CMA 3 Way Module with Cleaning Opening & Plug 280 x 280 x 280 mm	- 1
Flue Connection 70 x 280 x 280 mm	- 2
Sealing Rope 18 mm / 1.26 m	- 2
Base Plate 250 x 500 x 39 mm	- 2

Set 3

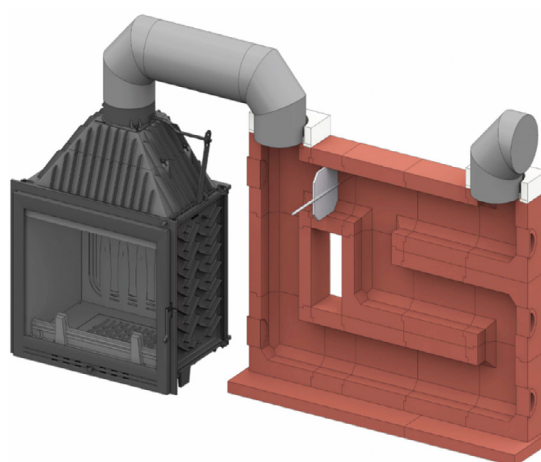
Prefabricated Ceramic Heat Storage

Ceramic Heat Storage Units are designed to capture heat traveling through the flue system, which would otherwise be wasted. It reduces the temperature of the exhaust gasses to approximately 150°C, for the correct operation of the flue. The energy accumulated is slowly radiated to your surrounds after the fire extinguishes. This increases the efficiency and heating cycle of any new or existing fireplace.



Technical

Weight: 557 kg
Height: 94.9 cm
Width: 126 cm
Depth: 28 cm
Chimney Draught: 13 Pa
Additional Firewood Load (<20% moisture): 8 kg
Amount of Stored Energy: 25.6 kWh
Heated Area @ 13 W/m ² in a 8hr cycle: 246 m ²



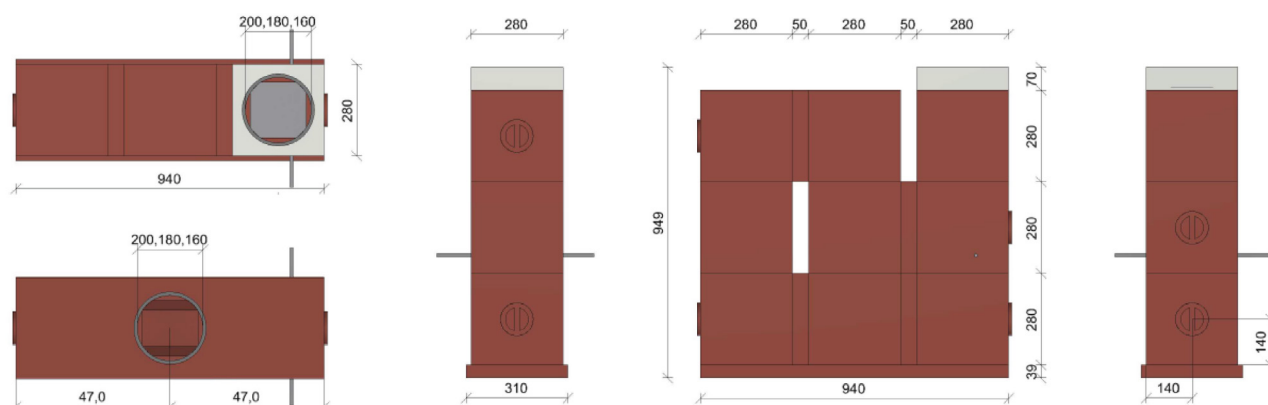
Components

CMA Straight 280 x 280 x 280 mm	- 5
CMA Half 140 x 280 x 280 mm	- 1
CMA Half with Damper 140 x 280 x 280 mm	- 1
CMA Elbow 90° 280 x 280 x 280 mm	- 1
CMA Elbow 90° with Cleaning Opening & Plug 280 x 280 x 280 mm	- 4
CMA 3 Way Module 280 x 280 x 280 mm	- 1
CMA 3 Way Module with Cleaning Opening & Plug 280 x 280 x 280 mm	- 1
Flue Connection 70 x 280 x 280 mm	- 2
Sealing Rope 18 mm / 1.26 m	- 2
Base Plate 250 x 500 x 39 mm	- 2

Set 4 + Stand

Prefabricated Ceramic Heat Storage

Ceramic Heat Storage Units are designed to capture heat traveling through the flue system, which would otherwise be wasted. It reduces the temperature of the exhaust gasses to approximately 150°C, for the correct operation of the flue. The energy accumulated is slowly radiated to your surrounds after the fire extinguishes. This increases the efficiency and heating cycle of any new or existing fireplace.

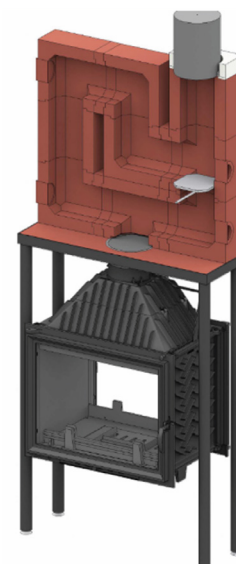


Technical

Weight: 405 kg
Height: 94.9 cm
Width: 94 cm
Depth: 28 cm
Chimney Draught: 13 Pa
Additional Firewood Load (<20% moisture): 5.5 kg
Amount of Stored Energy: 5.5 kWh
Heated Area @ 13 W/m ² in a 8hr cycle: 169 m ²

Components

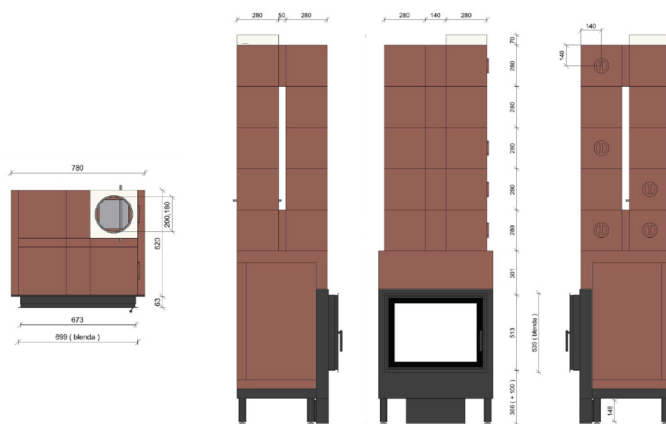
CMA Straight 280 x 280 x 280 mm	- 2
CMA Elbow 90o 280 x 280 x 280 mm	- 3
CMA 3 Way Module 280 x 280 x 280 mm	- 1
CMA 3 Way Module with Cleaning Opening & Plug 280 x 280 x 280 mm	- 1
Flue Connection 70 x 280 x 280 mm	- 1
CMA Spacer 50 x 280 x 280 mm	- 4
Sealing Rope 18 mm / 1.26 m	- 1
Base Plate	- 2
Steel Stand with adjustable legs Height up to 1300mm (+/- 100mm) x 950 x 320 mm	- 1



550

Prefabricated Site Built Masonry Fireplace

Invented by Cebud and the University of Krakow Poland, this highly efficient fireplaces features a low fuel consumption and modern tiled stove/heater design. It is capable of being the main heating source of any house or living space. This unit directs hot gas from the fire into its ceramic heat storage modules. The modules absorb the heat energy and radiate it to your surroundings over a period of time (approx: 12hrs), like a battery. Typically only 2 fires a day are required. The solid part of your home that never loses its value.



Technical

Weight - Base Fire Box : 600 kg
Weight - Heat Storage Modules: 954kg
Chimney Draught: 13 Pa
Standard Firewood Load (<20% moisture): 18 kg
Amount of Accumulated Energy: 60 kWh
Energy Output @8hr Heating Cycles: 7.5kW
Energy Output @12hr Heating Cycles: 5kW
Heated Area @ 13 W/m ² in a 8hr cycle: 385 m ²

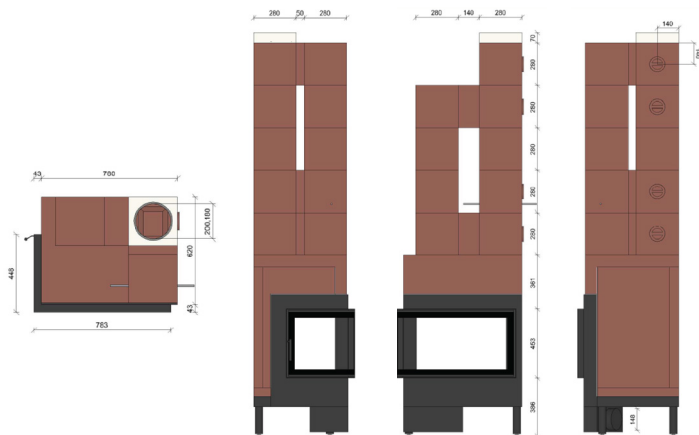
Components

PPA Set of Akubet Elements for Base Firebox	- 1
PPA Steel Frame with Door 510 x 670 mm	- 1
CMA Straight 280 x 280 x 280 mm	- 5
CMA Half 140 x 280 x 280 mm	- 7
CMA Elbow 90° 280 x 280 x 280 mm	- 10
CMA Elbow 90° with Cleaning Opening & Plug 280 x 280 x 280 mm	- 3
CMA Elbow 90° with Inlet, Cleaning Opening & Plug 280 x 280 x 280 mm	- 1
CMA 3 Way Module with Cleaning Opening, Plug & Damper 280 x 280 x 280 mm	- 1
CMA Spacer 50 x 280 x 280 mm	- 2
Flue Connection (Fits 200mm Flue) 70 x 280 x 280 mm	- 1
Sealing Rope 18 mm / 1.3m	- 1

550 Corner

Prefabricated Site Built Masonry Fireplace

Invented by Cebud and the University of Krakow Poland, this highly efficient fireplaces features a low fuel consumption and modern tiled stove/heater design. It is capable of being the main heating source of any house or living space. This unit directs hot gas from the fire into its ceramic heat storage modules. The modules absorb the heat energy and radiate it to your surroundings over a period of time (approx: 12hrs), like a battery. Typically only 2 fires a day are required The solid part of your home that never loses its value.



Technical

Weight - Base Fire Box : 560 kg

Weight - Heat Storage Modules: 619kg

Chimney Draught: 13 Pa

Standard Firewood Load (<20% moisture): 13 kg

Amount of Accumulated Energy: 43kWh

Energy Output @8hr Heating Cycles: 5.4kW

Energy Output @12hr Heating Cycles: 3.6kW

Heated Area @ 13 W/m² in a 8hr cycle: 276 m²

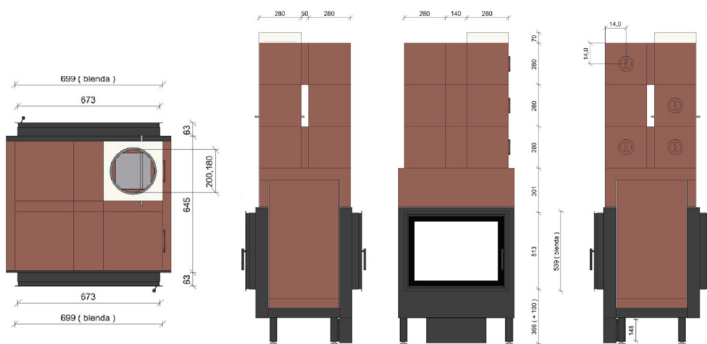
Components

PPA Set of Akubet Elements for Base Firebox	- 1
PPA Steel Frame with corner Door 450 x 780 x 450 mm	- 1
CMA Straight 280 x 280 x 280 mm	- 5
CMA Half 140 x 280 x 280 mm	- 2
CMA Elbow 90° 280 x 280 x 280 mm	- 4
CMA Elbow 90° with Cleaning Opening & Plug 280 x 280 x 280 mm	- 4
CMA 3 Way Module with Cleaning Opening, Plug & Damper 280 x 280 x 280 mm	- 1
CMA Spacer 50 x 280 x 280 mm	- 3
Flue Connection (Fits 200mm Flue) 70 x 280 x 280 mm	- 1
Sealing Rope 18 mm / 1.3m	- 1

550 Tunnel

Prefabricated Site Built Masonry Fireplace

Invented by Cebud and the University of Krakow Poland, this highly efficient fireplace features a low fuel consumption and modern tiled stove/heater design. It is capable of being the main heating source of any house or living space. This unit directs hot gas from the fire into its ceramic heat storage modules. The modules absorb the heat energy and radiate it to your surroundings over a period of time (approx: 12hrs), like a battery. Typically only 2 fires a day are required. The solid part of your home that never loses its value.



Technical

- Weight - Base Fire Box : 600 kg
- Weight - Heat Storage Modules: 594kg
- Chimney Draught: 13 Pa
- Standard Firewood Load (<20% moisture): 13 kg
- Amount of Accumulated Energy: 43kWh
- Energy Output @8hr Heating Cycles: 5.4kW
- Energy Output @12hr Heating Cycles: 3.6kW
- Heated Area @ 13 W/m² in a 8hr cycle: 276 m²



Components

PPA Set of Akubet Elements for Base Firebox	-1
PPA Steel Frame with Double Door 500 x 670 mm	- 1
CMA Straight 280 x 280 x 280 mm	- 1
CMA Half 140 x 280 x 280 mm	- 5
CMA Elbow 90° 280 x 280 x 280 mm	- 7
CMA Elbow 90° with Cleaning Opening & Plug 280 x 280 x 280 mm	- 2
CMA Elbow 90° with Inlet, Cleaning Opening & Plug 280 x 280 x 280 mm	- 1
CMA 3 Way Module with Cleaning Opening, Plug & Damper 280 x 280 x 280 mm	- 1
CMA Spacer 50 x 280 x 280 mm	- 2
Flue Connection (Fits 200mm Flue) 70 x 280 x 280 mm	- 1
Sealing Rope 18 mm / 1.3m	- 1

600

Prefabricated Site Built Masonry Fireplace

Invented by Cebud and the University of Krakow Poland, this highly efficient fireplaces features a low fuel consumption and modern tiled stove/heater design. It is capable of being the main heating source of any house or living space. This unit directs hot gas from the fire into its ceramic heat storage modules. The modules absorb the heat energy and radiate it to your surroundings over a period of time (approx: 12hrs), like a battery. Typically only 2 fires a day are required The solid part of your home that never loses its value.



Technical

Weight - Base Fire Box : 650 kg
Weight - Heat Storage Modules: 685kg
Chimney Draught: 13 Pa
Standard Firewood Load (<20% moisture): 14.5 kg
Amount of Accumulated Energy: 48kWh
Energy Output @8hr Heating Cycles: 6kW
Energy Output @12hr Heating Cycles: 4kW
Heated Area @ 13 W/m ² in a 8hr cycle: 307 m ²

Components

PPA Set of Akubet Elements for Base Firebox	- 1
PPA Steel Frame with Door 450 x 900 mm	- 1
CMA Straight 280 x 280 x 280 mm	- 9
CMA Half 140 x 280 x 280 mm	- 4
CMA Elbow 90° 280 x 280 x 280 mm	- 2
CMA Elbow 90° with Cleaning Opening & Plug 280 x 280 x 280 mm	- 3
CMA 3 Way Module with Cleaning Opening, Plug & Damper 280 x 280 x 280 mm	- 1
Flue Connection (Fits 200mm Flue) 70 x 280 x 280 mm	- 1
Sealing Rope 18 mm / 1.3m	- 1

600

Prefabricated Site Built Masonry Fireplace

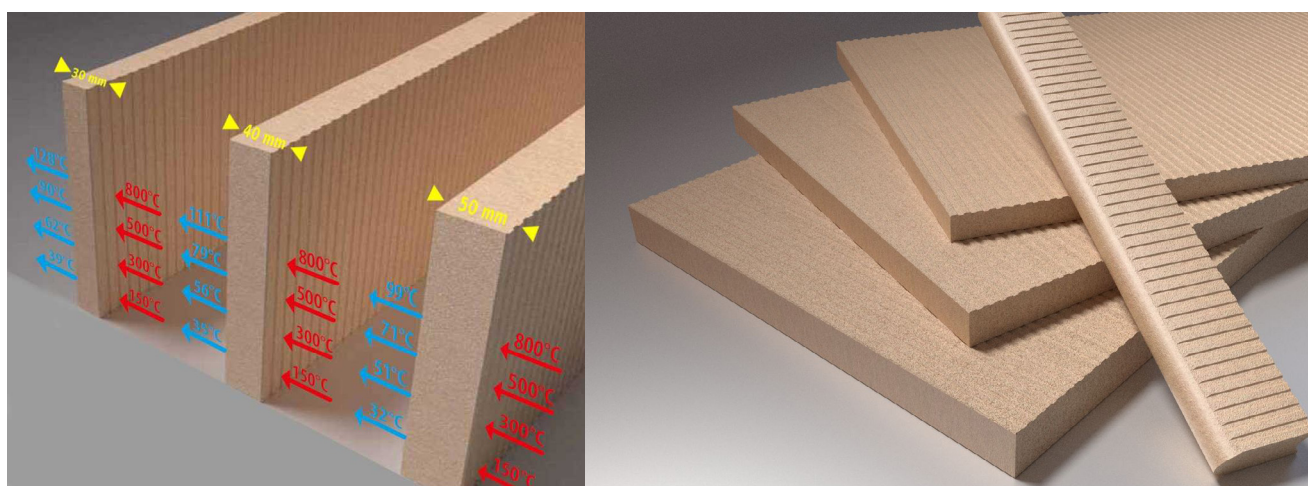


True Life Representation

Grenaisol

Insulation Boards

Construction and insulation material all in one. Minimal demands on space. This natural material is simple, economic, and can be easily worked with both hand and mechanical tools. This material provides fireplaces with shell rigidity and insulation. Thin render painted with acrylic paint, ceramic tiles and stones can be clad on top for decoration.



Technical

Dimensions : 1200 x 800 mm x 30, 40 mm
1000 x 610 mm x 30, 40, 50 mm

Classification temperature: 950°C

Density: 430kg/m³

Thermal conductivity at 200 °C : 0.203 W/mk

Compressive strength: 1.2MPa

Bending strength: 0.4MPa

Components

Sold as individual boards, dimensions as above.

Optional purchase: Grena glue, Stove fabric mesh, Stove render



Darco

Heat Distribution System

This product is a central heating system which can be installed with any built-in fireplace or retrofitted into existing builds. It can provide heat distribution into multiple areas of a house.

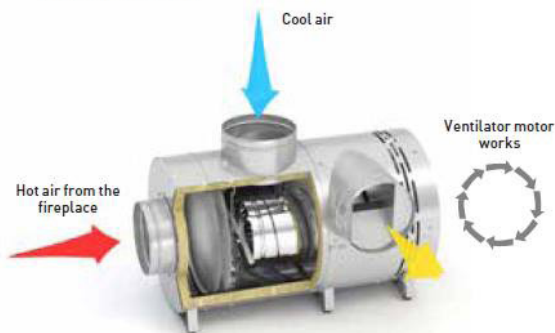
- I. Temperature in fireplace hood is below the temperature of automatic start set on ART-AN controller (for example 40°C).**



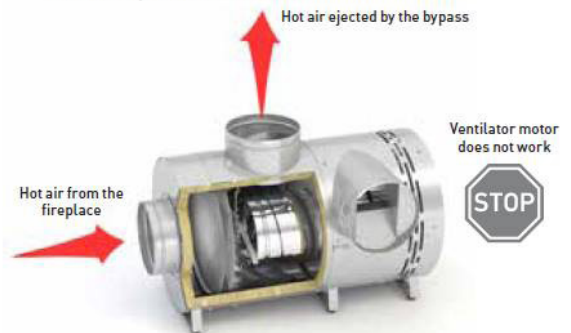
- II. Temperature in fireplace hood is between 40°C and 70°C.**



- III. Temperature in fireplace hood is high (between 70 and 180°C).**



- IV. Hot air ventilator does not work (for example due to a power failure).**



Technical

BANAN ECO FAN : type 1 delivers : 400 m³ hot air/hr
type 2 delivers : 600 m³ hot air/hr
type 3 delivers : 1000 m³ hot air/hr

Components

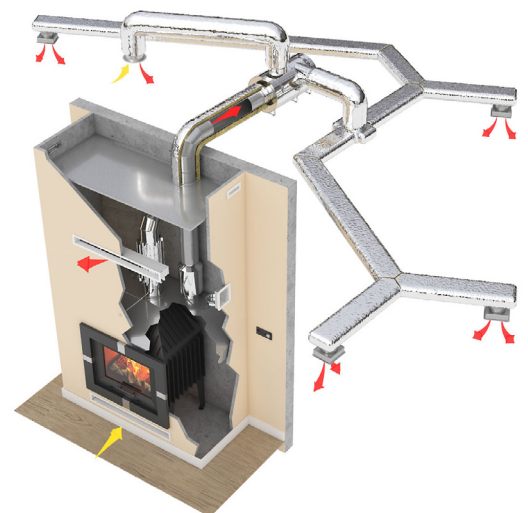
BANAN ECO FAN 3 types available

Universal Controller (ART-AN)

Hot Air Ducts (insulated to 250 °C)

Multiple Metal Distribution Boxes and Splitters

Ceiling Vents





VIEW THIS CATALOGUE ONLINE
SCAN THE QR CODE BELOW



WOOD HEATING RE-INVENTED

Australian and New Zealand standards:

Our fireplaces comply with strict EU standards and are tested and approved for Australian and New Zealand standards. [Australian/New Zealand Standard (AS/NZ4012:2014) Domestic Solid Fuel Burning Appliance].

Proud members of:

